

**Product Name: GRP78 BiP Rabbit Monoclonal Antibody**  
**Catalog #: AMRe02063**



## Summary

<b>Production Name</b>	GRP78 BiP Rabbit Monoclonal Antibody
<b>Description</b>	Rabbit Monoclonal antibody
<b>Host</b>	Rabbit
<b>Application</b>	WB,IHC-P
<b>Reactivity</b>	Human,Rat

## Performance

<b>Conjugation</b>	Unconjugated
<b>Modification</b>	Unmodified
<b>Isotype</b>	IgG
<b>Clonality</b>	Monoclonal
<b>Form</b>	Liquid
<b>Storage</b>	Store at 4°C short term. Aliquot and store at -20°C long term. Avoid freeze/thaw cycles.
<b>Buffer</b>	50mM Tris-Glycine(pH 7.4), 0.15M NaCl, 40% Glycerol, 0.01% Sodium azide and 0.05% BSA
<b>Purification</b>	Affinity Purification

## Immunogen

<b>Gene Name</b>	HSPA5 HSPA5; GRP78; 78 kDa glucose-regulated protein; GRP-78; Endoplasmic reticulum
<b>Alternative Names</b>	luminal Ca(2+)-binding protein grp78; Heat shock 70 kDa protein 5; Immunoglobulin heavy chain-binding protein; BiP
<b>Gene ID</b>	3309
<b>SwissProt ID</b>	P11021.

## Application

<b>Dilution Ratio</b>	WB: 1:500-1:1000 IHC: 1:50-1:100
<b>Molecular Weight</b>	Calculated MW: 72 kDa; Observed MW: 78 kDa

**Product Name: GRP78 BiP Rabbit Monoclonal Antibody**  
**Catalog #: AMRe02063**



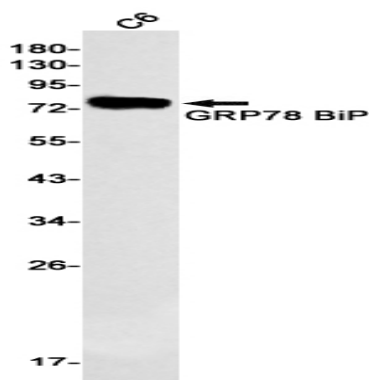
## Background

When Chinese hamster K12 cells are starved of glucose, the synthesis of several proteins, called glucose-regulated proteins (GRPs), is markedly increased. Hendershot et al. (1994) (PubMed 8020977) pointed out that one of these, GRP78 (HSPA5), also referred to as 'immunoglobulin heavy chain-binding protein' (BiP), is a member of the heat-shock protein-70 (HSP70) family and is involved in the folding and assembly of proteins in the endoplasmic reticulum (ER).

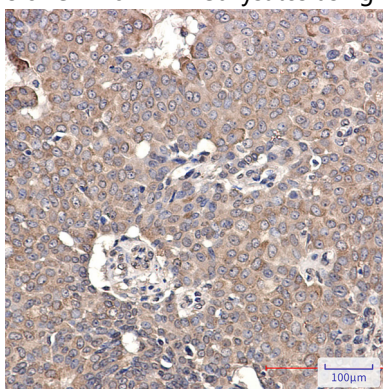
## Research Area

Tags & Cell Markers

## Image Data



Western blot analysis of GRP78 BiP in C6 lysates using GRP78 BiP antibody.



Immunohistochemistry analysis of paraffin-embedded Human breast cancer using GRP78 BiP antibody. High-pressure and temperature Sodium Citrate pH 6.0 was used for antigen retrieval.

## Note

For research use only.