

Product Name: GDF15 Rabbit Monoclonal antibody
Catalog #: AMRe02026



Summary

Production Name	GDF15 Rabbit Monoclonal antibody
Description	Recombinant Rabbit Monoclonal antibody
Host	Rabbit
Application	WB
Reactivity	Human

Performance

Conjugation	Unconjugated
Modification	Unmodified
Isotype	IgG
Clonality	Monoclonal Antibody
Form	Liquid
Storage	Store at 4°C short term. Aliquot and store at -20°C long term. Avoid freeze/thaw cycles.
Buffer	50mM Tris-Glycine(pH 7.4), 0.15M NaCl, 40% Glycerol, 0.01% Sodium azide and 0.05% BSA
Purification	Affinity Purified

Immunogen

Gene Name	GDF15
Alternative Names	GDF15; MIC1; PDF; PLAB; PTGFB; Growth/differentiation factor 15; GDF-15; Macrophage inhibitory cytokine 1; MIC-1; NSAID-activated gene 1 protein; NAG-1; NSAID-regulated gene 1 protein; NRG-1; Placental TGF-beta; Placental bone morphogenetic
Gene ID	9518
SwissProt ID	Q99988.

Application

Dilution Ratio	WB: 1:500-1:1000
Molecular Weight	Calculated MW: 34 kDa; Observed MW: 34 kDa

Product Name: GDF15 Rabbit Monoclonal antibody
Catalog #: AMRe02026



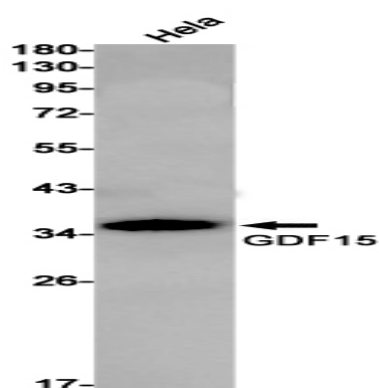
Background

Highly expressed in placenta, with lower levels in prostate and colon and some expression in kidney.

Research Area

Cell Biology

Image Data



Western blot analysis of GDF15 in HeLa lysates using GDF15 antibody.

Note

For research use only.