

**Product Name: Galectin 1 Rabbit Monoclonal antibody**  
**Catalog #: AMRe02017**



## Summary

<b>Production Name</b>	Galectin 1 Rabbit Monoclonal antibody
<b>Description</b>	Recombinant Rabbit Monoclonal antibody
<b>Host</b>	Rabbit
<b>Application</b>	WB,IHC-P,IP
<b>Reactivity</b>	Human,Rat

## Performance

<b>Conjugation</b>	Unconjugated
<b>Modification</b>	Unmodified
<b>Isotype</b>	IgG
<b>Clonality</b>	Monoclonal Antibody
<b>Form</b>	Liquid
<b>Storage</b>	Store at 4°C short term. Aliquot and store at -20°C long term. Avoid freeze/thaw cycles.
<b>Buffer</b>	50mM Tris-Glycine(pH 7.4), 0.15M NaCl, 40% Glycerol, 0.01% Sodium azide and 0.05% BSA
<b>Purification</b>	Affinity Purified

## Immunogen

<b>Gene Name</b>	LGALS1
<b>Alternative Names</b>	LGALS1; Galectin-1; Gal-1; 14 kDa laminin-binding protein; HLBP14; 14 kDa lectin; Beta-galactoside-binding lectin L-14-I; Galaptin; HBL; HPL; Lactose-binding lectin 1; Lectin galactoside-binding soluble 1; Putative MAPK-activating protein P
<b>Gene ID</b>	3956
<b>SwissProt ID</b>	P09382.

## Application

<b>Dilution Ratio</b>	WB: 1:500-1:1000 IHC: 1:50-1:100 IP: 1:20
<b>Molecular Weight</b>	Calculated MW: 15 kDa; Observed MW: 15 kDa

**Product Name: Galectin 1 Rabbit Monoclonal antibody**  
**Catalog #: AMRe02017**



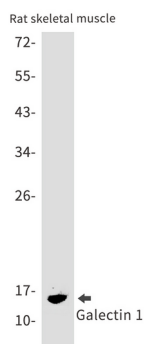
## Background

May regulate apoptosis, cell proliferation and cell differentiation. Binds beta-galactoside and a wide array of complex carbohydrates. Inhibits CD45 protein phosphatase activity and therefore the dephosphorylation of Lyn kinase.

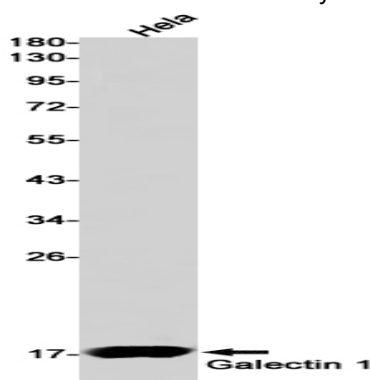
## Research Area

Cell Biology

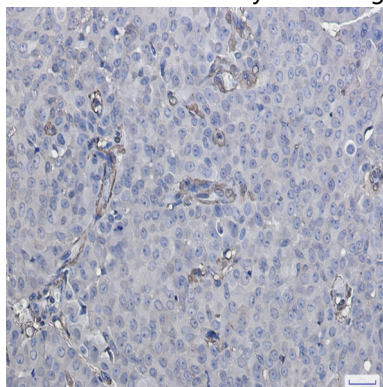
## Image Data



Western blot analysis of Galectin 1 in rat skeletal muscle lysates using Galectin 1 antibody.



Western blot analysis of Galectin 1 in HeLa lysates using Galectin 1 antibody.



**Product Name: Galectin 1 Rabbit Monoclonal antibody**  
**Catalog #: AMRe02017**



---

Immunohistochemistry analysis of paraffin-embedded Human breast cancer using Galectin 1 antibody. High-pressure and temperature Sodium Citrate pH 6.0 was used for antigen retrieval.

**Note**

For research use only.