

Product Name: Fibulin 1 Rabbit Monoclonal Antibody
Catalog #: AMRe01987



Summary

Production Name	Fibulin 1 Rabbit Monoclonal Antibody
Description	Rabbit Monoclonal antibody
Host	Rabbit
Application	WB,IP
Reactivity	Human,Mouse

Performance

Conjugation	Unconjugated
Modification	Unmodified
Isotype	IgG
Clonality	Monoclonal
Form	Liquid
Storage	Store at 4°C short term. Aliquot and store at -20°C long term. Avoid freeze/thaw cycles.
Buffer	50mM Tris-Glycine(pH 7.4), 0.15M NaCl, 40% Glycerol, 0.01% Sodium azide and 0.05% BSA
Purification	Affinity Purification

Immunogen

Gene Name	FBLN1
Alternative Names	FBLN; FIBL1
Gene ID	2192
SwissProt ID	P23142.

Application

Dilution Ratio	WB: 1:500-1:1000 IP: 1:20
Molecular Weight	Calculated MW: 77 kDa; Observed MW: 77 kDa

Background

Incorporated into fibronectin-containing matrix fibers. May play a role in cell adhesion and migration along protein fibers

Product Name: Fibulin 1 Rabbit Monoclonal Antibody
Catalog #: AMRe01987

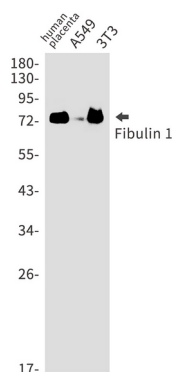


within the extracellular matrix (ECM). Could be important for certain developmental processes and contribute to the supramolecular organization of ECM architecture, in particular to those of basement membranes. Has been implicated in a role in cellular transformation and tumor invasion, it appears to be a tumor suppressor. May play a role in haemostasis and thrombosis owing to its ability to bind fibrinogen and incorporate into clots. Could play a significant role in modulating the neurotrophic activities of APP, particularly soluble APP.

Research Area

Cardiovascular

Image Data



Western blot analysis of Fibulin 1 in Human placenta, A549, 3T3 lysates using Fibulin 1 antibody.

Note

For research use only.