

Product Name: XPO4 Rabbit Monoclonal Antibody
Catalog #: AMRe01964



Summary

Production Name	XPO4 Rabbit Monoclonal Antibody
Description	Rabbit Monoclonal antibody
Host	Rabbit
Application	WB,IP
Reactivity	Human,Rat

Performance

Conjugation	Unconjugated
Modification	Unmodified
Isotype	IgG
Clonality	Monoclonal
Form	Liquid
Storage	Store at 4°C short term. Aliquot and store at -20°C long term. Avoid freeze/thaw cycles.
Buffer	50mM Tris-Glycine(pH 7.4), 0.15M NaCl, 40% Glycerol, 0.01% Sodium azide and 0.05% BSA
Purification	Affinity Purification

Immunogen

Gene Name	XPO4
Alternative Names	exp4
Gene ID	64328
SwissProt ID	Q9C0E2.

Application

Dilution Ratio	WB: 1:500-1:1000 IP: 1:20
Molecular Weight	Calculated MW: 130 kDa; Observed MW: 130 kDa

Background

Mediates the nuclear export of proteins (cargos) with broad substrate specificity. In the nucleus binds cooperatively to its

Product Name: XPO4 Rabbit Monoclonal Antibody
Catalog #: AMRe01964

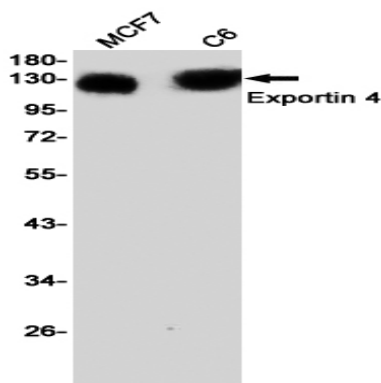


cargo and to the GTPase Ran in its active GTP-bound form. Docking of this trimeric complex to the nuclear pore complex (NPC) is mediated through binding to nucleoporins. Upon transit of a nuclear export complex into the cytoplasm, disassembling of the complex and hydrolysis of Ran-GTP to Ran-GDP (induced by RANBP1 and RANGAP1, respectively) cause release of the cargo from the export receptor. XPO4 then return to the nuclear compartment and mediate another round of transport. The directionality of nuclear export is thought to be conferred by an asymmetric distribution of the GTP- and GDP-bound forms of Ran between the cytoplasm and nucleus.

Research Area

Epigenetics and Nuclear Signaling

Image Data



Western blot analysis of Exportin 4 in MCF-7, C6 lysates using XPO4 antibody.

Note

For research use only.