

**Product Name: ENT2 Rabbit Monoclonal Antibody**  
**Catalog #: AMRe01951**



## Summary

<b>Production Name</b>	ENT2 Rabbit Monoclonal Antibody
<b>Description</b>	Rabbit Monoclonal antibody
<b>Host</b>	Rabbit
<b>Application</b>	WB,IHC-F,IHC-P,ICC/IF
<b>Reactivity</b>	Human

## Performance

<b>Conjugation</b>	Unconjugated
<b>Modification</b>	Unmodified
<b>Isotype</b>	IgG
<b>Clonality</b>	Monoclonal
<b>Form</b>	Liquid
<b>Storage</b>	Store at 4°C short term. Aliquot and store at -20°C long term. Avoid freeze/thaw cycles.
<b>Buffer</b>	50mM Tris-Glycine(pH 7.4), 0.15M NaCl, 40% Glycerol, 0.01% Sodium azide and 0.05% BSA
<b>Purification</b>	Affinity Purification

## Immunogen

<b>Gene Name</b>	SLC29A2
<b>Alternative Names</b>	DER12; ei-type; HNP36; Nucleoside transporter; SLC29A2
<b>Gene ID</b>	3177
<b>SwissProt ID</b>	Q14542.

## Application

<b>Dilution Ratio</b>	WB: 1:500-1:1000 IHC: 1:50-1:100 IF: 1:50-1:200
<b>Molecular Weight</b>	Calculated MW: 50 kDa; Observed MW: 60 kDa

## Background

**Product Name: ENT2 Rabbit Monoclonal Antibody**  
**Catalog #: AMRe01951**

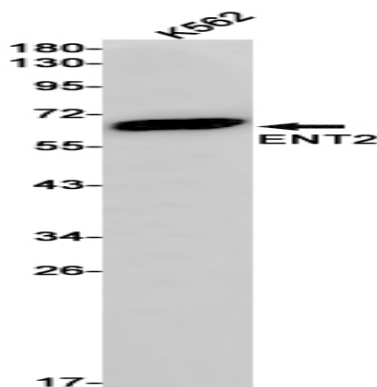


Mediates equilibrative transport of purine, pyrimidine nucleosides and the purine base hypoxanthine. Very less sensitive than SLC29A1 to inhibition by nitrobenzylthioinosine (NBMPR), dipyridamole, dilazep and draflazine.

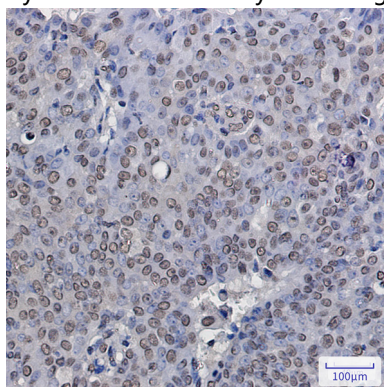
## Research Area

Signal Transduction

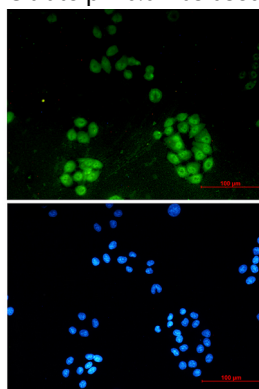
## Image Data



Western blot analysis of ENT2 in K562 lysates using ENT2 antibody.



Immunohistochemistry analysis of paraffin-embedded Human breast cancer using ENT2 antibody. High-pressure and temperature Sodium Citrate pH 6.0 was used for antigen retrieval.



Immunocytochemistry analysis of ENT2 (green) in Hela using ENT2 antibody, and DAPI (blue)

**Product Name: ENT2 Rabbit Monoclonal Antibody**  
**Catalog #: AMRe01951**

---



**Note**

For research use only.