

Product Name: ELK1 Rabbit Monoclonal Antibody
Catalog #: AMRe01942



Summary

Production Name	ELK1 Rabbit Monoclonal Antibody
Description	Rabbit Monoclonal antibody
Host	Rabbit
Application	WB,IHC-P,IP,ChIP
Reactivity	Human

Performance

Conjugation	Unconjugated
Modification	Unmodified
Isotype	IgG
Clonality	Monoclonal
Form	Liquid
Storage	Store at 4°C short term. Aliquot and store at -20°C long term. Avoid freeze/thaw cycles.
Buffer	50mM Tris-Glycine(pH 7.4), 0.15M NaCl, 40% Glycerol, 0.01% Sodium azide and 0.05% BSA
Purification	Affinity Purification

Immunogen

Gene Name	ELK1
Alternative Names	ETS domain-containing protein Elk-1
Gene ID	2002
SwissProt ID	P19419.

Application

Dilution Ratio	WB: 1:500-1:1000 IHC: 1:50-1:100 IP: 1:20 ChIP: 1:20
Molecular Weight	Calculated MW: 45 kDa; Observed MW: 62 kDa

Background

Product Name: ELK1 Rabbit Monoclonal Antibody
Catalog #: AMRe01942

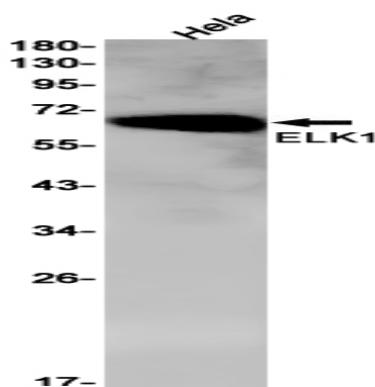


This gene is a member of the Ets family of transcription factors and of the ternary complex factor (TCF) subfamily. Proteins of the TCF subfamily form a ternary complex by binding to the the serum response factor and the serum reponse element in the promoter of the c-fos proto-oncogene. The protein encoded by this gene is a nuclear target for the ras-raf-MAPK signaling cascade.

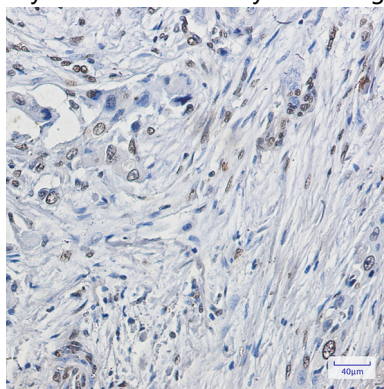
Research Area

Signal Transduction

Image Data



Western blot analysis of ELK1 in HeLa lysates using ELK1 antibody.



Immunohistochemistry analysis of paraffin-embedded Human lung cancer using ELK1 antibody. High-pressure and temperature Sodium Citrate pH 6.0 was used for antigen retrieval.

Note

For research use only.