

## Summary

<b>Production Name</b>	eIF1A Rabbit Monoclonal Antibody
<b>Description</b>	Rabbit Monoclonal antibody
<b>Host</b>	Rabbit
<b>Application</b>	WB,IHC-F,IHC-P,ICC/IF,IP
<b>Reactivity</b>	Human,Mouse,Rat

## Performance

<b>Conjugation</b>	Unconjugated
<b>Modification</b>	Unmodified
<b>Isotype</b>	IgG
<b>Clonality</b>	Monoclonal
<b>Form</b>	Liquid
<b>Storage</b>	Store at 4°C short term. Aliquot and store at -20°C long term. Avoid freeze/thaw cycles.
<b>Buffer</b>	50mM Tris-Glycine(pH 7.4), 0.15M NaCl, 40% Glycerol, 0.01% Sodium azide and 0.05% BSA
<b>Purification</b>	Affinity Purification

## Immunogen

<b>Gene Name</b>	EIF1AX
<b>Alternative Names</b>	EIF1A; EIF4C; eIF-1A; eIF-4C; EIF1AP1
<b>Gene ID</b>	1964
<b>SwissProt ID</b>	P47813.

## Application

<b>Dilution Ratio</b>	WB: 1:500-1:1000 IHC: 1:50-1:100 IF: 1:50-1:200 IP: 1:20
<b>Molecular Weight</b>	Calculated MW: 16 kDa; Observed MW: 16 kDa

## Background

**Product Name: eIF1A Rabbit Monoclonal Antibody**  
**Catalog #: AMRe01934**

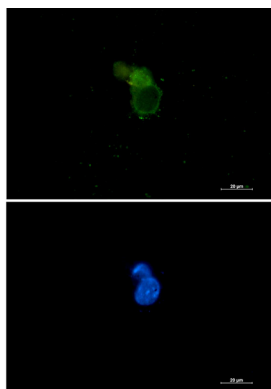


Seems to be required for maximal rate of protein biosynthesis. Enhances ribosome dissociation into subunits and stabilizes the binding of the initiator Met-tRNA(I) to 40 S ribosomal subunits.

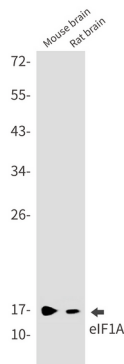
## Research Area

Epigenetics and Nuclear Signaling

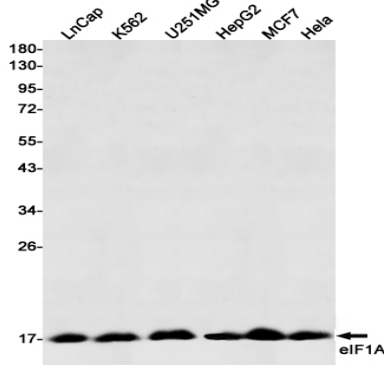
## Image Data



Immunocytochemistry analysis of eIF1A (green) in 293 using eIF1A antibody, and DAPI (blue).



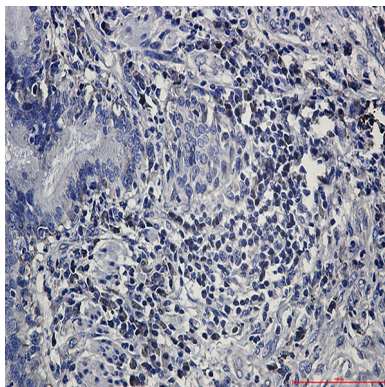
Western blot analysis of eIF1A in mouse brain, rat brain lysates using eIF1A antibody.



Western blot analysis of eIF1A in LnCap, K562, U251MG, HepG2, MCF-7, HeLa lysates using eIF1A antibody

**Product Name: eIF1A Rabbit Monoclonal Antibody**  
**Catalog #: AMRe01934**

---



Immunohistochemistry analysis of paraffin-embedded Human lung cancer using eIF1A antibody. High-pressure and temperature Sodium Citrate pH 6.0 was used for antigen retrieval.

**Note**

For research use only.