

**Product Name: DYNLL1 Rabbit Monoclonal antibody**  
**Catalog #: AMRe01926**



## Summary

<b>Production Name</b>	DYNLL1 Rabbit Monoclonal antibody
<b>Description</b>	Recombinant Rabbit Monoclonal antibody
<b>Host</b>	Rabbit
<b>Application</b>	WB,IHC-P,IP
<b>Reactivity</b>	Human,Mouse

## Performance

<b>Conjugation</b>	Unconjugated
<b>Modification</b>	Unmodified
<b>Isotype</b>	IgG
<b>Clonality</b>	Monoclonal Antibody
<b>Form</b>	Liquid
<b>Storage</b>	Store at 4°C short term. Aliquot and store at -20°C long term. Avoid freeze/thaw cycles.
<b>Buffer</b>	50mM Tris-Glycine(pH 7.4), 0.15M NaCl, 40% Glycerol, 0.01% Sodium azide and 0.05% BSA
<b>Purification</b>	Affinity Purified

## Immunogen

<b>Gene Name</b>	DYNLL1
<b>Alternative Names</b>	LC8; PIN; DLC1; DLC8; LC8a; DNCL1; hdlc1; DNCLC1
<b>Gene ID</b>	8655
<b>SwissProt ID</b>	P63167.

## Application

<b>Dilution Ratio</b>	WB: 1:500-1:1000 IHC: 1:50-1:100 IP: 1:20
<b>Molecular Weight</b>	Calculated MW: 10 kDa; Observed MW: 10 kDa

## Background

**Product Name: DYNLL1 Rabbit Monoclonal antibody**  
**Catalog #: AMRe01926**

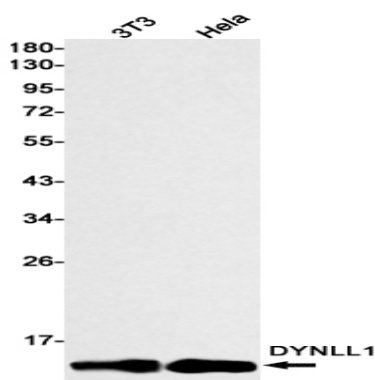


Acts as one of several non-catalytic accessory components of the cytoplasmic dynein 1 complex that are thought to be involved in linking dynein to cargos and to adapter proteins that regulate dynein function. Cytoplasmic dynein 1 acts as a motor for the intracellular retrograde motility of vesicles and organelles along microtubules. May play a role in changing or maintaining the spatial distribution of cytoskeletal structures.

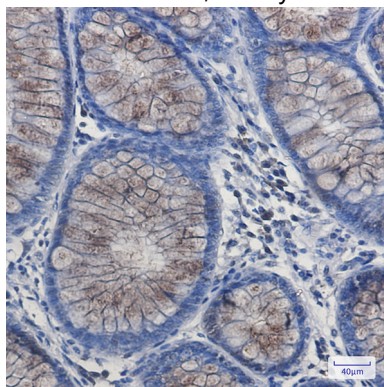
## Research Area

Cell Biology

## Image Data



Western blot analysis of DYNLL1 in 3T3, HeLa lysates using DYNLL1 antibody.



Immunohistochemistry analysis of paraffin-embedded Human colon cancer using DYNLL1 antibody. High-pressure and temperature Sodium Citrate pH 6.0 was used for antigen retrieval.

## Note

For research use only.