

**Product Name: Phospho-Cytokeratin 8 (Ser23) Rabbit
Monoclonal Antibody
Catalog #: AMRe01891**



Summary

Production Name	Phospho-Cytokeratin 8 (Ser23) Rabbit Monoclonal Antibody
Description	Rabbit Monoclonal antibody
Host	Rabbit
Application	WB,IHC-F,IHC-P,ICC/IF,IP
Reactivity	Human

Performance

Conjugation	Unconjugated
Modification	Phosphorylated
Isotype	IgG
Clonality	Monoclonal
Form	Liquid
Storage	Store at 4°C short term. Aliquot and store at -20°C long term. Avoid freeze/thaw cycles.
Buffer	50mM Tris-Glycine(pH 7.4), 0.15M NaCl, 40% Glycerol, 0.01% Sodium azide and 0.05% BSA
Purification	Affinity Purification

Immunogen

Gene Name	KRT8
Alternative Names	KRT8; CYK8; Keratin; type II cytoskeletal 8; Cytokeratin-8; CK-8; Keratin-8; K8; Type-II keratin Kb8
Gene ID	3856
SwissProt ID	P05787.

Application

Dilution Ratio	WB: 1:500-1:1000 IHC: 1:50-1:100 IF: 1:50-1:200 IP: 1:20
Molecular Weight	Calculated MW: 54 kDa; Observed MW: 54 kDa

**Product Name: Phospho-Cytokeratin 8 (Ser23) Rabbit
Monoclonal Antibody
Catalog #: AMRe01891**



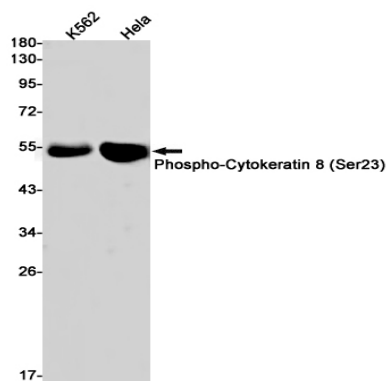
Background

Together with KRT19, helps to link the contractile apparatus to dystrophin at the costameres of striated muscle. K8 a type II cytoskeletal keratin. The keratins are intermediate filament proteins responsible for the structural integrity of epithelial cells and are subdivided into cytokeratins and hair keratins.

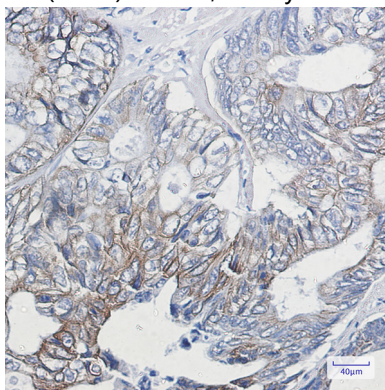
Research Area

Signal Transduction

Image Data

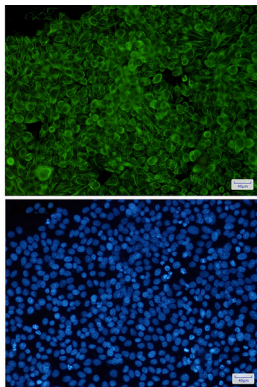


Western blot analysis of Phospho-Cytokeratin 8 (Ser23) in K562, HeLa lysates using Phospho-Cytokeratin 8 (Ser23) antibody.



Immunohistochemistry analysis of paraffin-embedded Human colon cancer using Cytokeratin 8 (Phospho-Ser23) antibody. High-pressure and temperature Sodium Citrate pH 6.0 was used for antigen retrieval.

**Product Name: Phospho-Cytokeratin 8 (Ser23) Rabbit
Monoclonal Antibody
Catalog #: AMRe01891**



Immunocytochemistry analysis of Cytokeratin 8 (Phospho-Ser23)(green) in Hela using Cytokeratin 8 (Phospho-Ser23) antibody, and DAPI(blue)

Note

For research use only.