

**Product Name: Cytochrome P450 1B1 Rabbit  
Monoclonal antibody  
Catalog #: AMRe01878**

---

## Summary

<b>Production Name</b>	Cytochrome P450 1B1 Rabbit Monoclonal antibody
<b>Description</b>	Recombinant Rabbit Monoclonal antibody
<b>Host</b>	Rabbit
<b>Application</b>	WB,IHC-P
<b>Reactivity</b>	Human,Rat

## Performance

<b>Conjugation</b>	Unconjugated
<b>Modification</b>	Unmodified
<b>Isotype</b>	IgG
<b>Clonality</b>	Monoclonal Antibody
<b>Form</b>	Liquid
<b>Storage</b>	Store at 4°C short term. Aliquot and store at -20°C long term. Avoid freeze/thaw cycles.
<b>Buffer</b>	50mM Tris-Glycine(pH 7.4), 0.15M NaCl, 40% Glycerol, 0.01% Sodium azide and 0.05% BSA
<b>Purification</b>	Affinity Purified

## Immunogen

<b>Gene Name</b>	CYP1B1
<b>Alternative Names</b>	CYP1B1; Cytochrome P450 1B1; CYP1B1
<b>Gene ID</b>	1545
<b>SwissProt ID</b>	Q16678.

## Application

<b>Dilution Ratio</b>	WB: 1:500-1:1000 IHC: 1:50-1:100
<b>Molecular Weight</b>	Calculated MW: 61 kDa; Observed MW: 61 kDa

**Product Name: Cytochrome P450 1B1 Rabbit  
Monoclonal antibody  
Catalog #: AMRe01878**

---

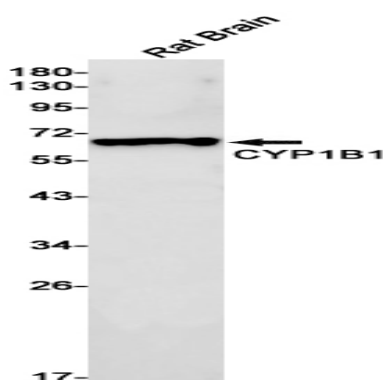
## Background

Cytochromes P450 are a group of heme-thiolate monooxygenases. In liver microsomes, this enzyme is involved in an NADPH-dependent electron transport pathway. It oxidizes a variety of structurally unrelated compounds, including steroids, fatty acids, and xenobiotics.

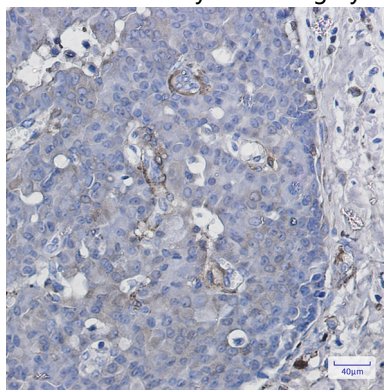
## Research Area

Cardiovascular

## Image Data



Western blot analysis of CYP1B1 in rat Brain lysates using Cytochrome P450 1B1 antibody.



Immunohistochemistry analysis of paraffin-embedded Human breast cancer using CYP1B1 antibody. High-pressure and temperature Sodium Citrate pH 6.0 was used for antigen retrieval.

## Note

For research use only.