

Product Name: Cyclin A2 Rabbit Monoclonal antibody
Catalog #: AMRe01869



Summary

Production Name	Cyclin A2 Rabbit Monoclonal antibody
Description	Recombinant Rabbit Monoclonal antibody
Host	Rabbit
Application	WB,IHC-F,IHC-P,ICC/IF
Reactivity	Human,Mouse,Rat

Performance

Conjugation	Unconjugated
Modification	Unmodified
Isotype	IgG
Clonality	Monoclonal Antibody
Form	Liquid
Storage	Store at 4°C short term. Aliquot and store at -20°C long term. Avoid freeze/thaw cycles.
Buffer	50mM Tris-Glycine(pH 7.4), 0.15M NaCl, 40% Glycerol, 0.01% Sodium azide and 0.05% BSA
Purification	Affinity Purified

Immunogen

Gene Name	Ccna2
Alternative Names	Ccn1; Ccna; Cyca; Ccn-1; CycA2; AA408589
Gene ID	12428.0
SwissProt ID	P51943.

Application

Dilution Ratio	WB: 1:500-1:1000 IHC: 1:50-1:100 IF: 1:50-1:200
Molecular Weight	Calculated MW: 47 kDa; Observed MW: 47 kDa

Background

Product Name: Cyclin A2 Rabbit Monoclonal antibody
Catalog #: AMRe01869

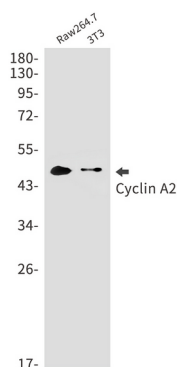


Cyclin which controls both the G1/S and the G2/M transition phases of the cell cycle. Functions through the formation of specific serine/threonine kinase holoenzyme complexes with the cyclin-dependent protein kinases CDK1 and CDK2. The cyclin subunit confers the substrate specificity of these complexes and differentially interacts with and activates CDK1 and CDK2 throughout the cell cycle.

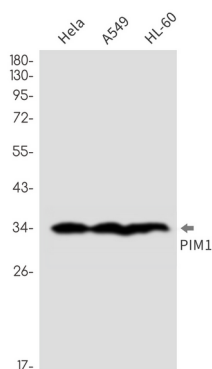
Research Area

Cell Biology

Image Data



Western blot analysis of Cyclin A2 in Raw264.7, 3T3 lysates using Cyclin A2 antibody.



Western blot analysis of Cyclin A2 in Jurkat, C6, A431 lysates using Cyclin A2 antibody.

Note

For research use only.