

**Product Name: Phospho-CREB (Ser133) Rabbit
Monoclonal antibody
Catalog #: AMRe01850**

Summary

Production Name	Phospho-CREB (Ser133) Rabbit Monoclonal antibody
Description	Recombinant Rabbit Monoclonal antibody
Host	Rabbit
Application	WB,IHC-P,IP
Reactivity	Human,Rat

Performance

Conjugation	Unconjugated
Modification	Phosphorylated
Isotype	IgG
Clonality	Monoclonal Antibody
Form	Liquid
Storage	Store at 4°C short term. Aliquot and store at -20°C long term. Avoid freeze/thaw cycles.
Buffer	50mM Tris-Glycine(pH 7.4), 0.15M NaCl, 40% Glycerol, 0.01% Sodium azide and 0.05% BSA
Purification	Affinity Purified

Immunogen

Gene Name	CREB1
Alternative Names	CREB1; Cyclic AMP-responsive element-binding protein 1; CREB-1; cAMP-responsive element-binding protein 1
Gene ID	1385
SwissProt ID	P16220.

Application

Dilution Ratio	WB: 1:500-1:1000 IHC: 1:50-1:100 IP: 1:20
Molecular Weight	Calculated MW: 35 kDa; Observed MW: 43 kDa

**Product Name: Phospho-CREB (Ser133) Rabbit
Monoclonal antibody
Catalog #: AMRe01850**



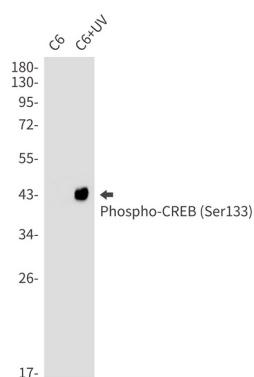
Background

This gene encodes a transcription factor that is a member of the leucine zipper family of DNA binding proteins. This protein binds as a homodimer to the cAMP-responsive element, an octameric palindrome.

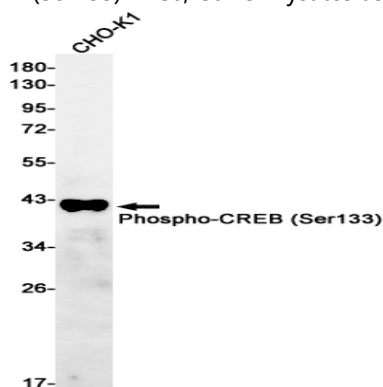
Research Area

Epigenetics and Nuclear Signaling

Image Data

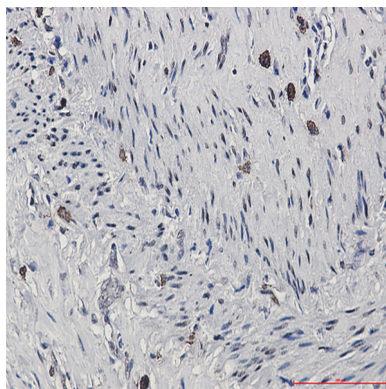


Western blot analysis of Phospho-CREB (Ser133) in C6, C6+UV lysates using Phospho-CREB (Ser133) antibody.



Western blot analysis of Phospho-CREB (Ser133) in CHO-K1 lysates using Phospho-CREB (Ser133) antibody.

**Product Name: Phospho-CREB (Ser133) Rabbit
Monoclonal antibody
Catalog #: AMRe01850**



Immunohistochemistry analysis of paraffin-embedded Human lung cancer using CREB (Phospho-Ser133) antibody. High-pressure and temperature Sodium Citrate pH 6.0 was used for antigen retrieval.

Note

For research use only.