

**Product Name: Cyclooxygenase 1 Rabbit Monoclonal antibody**  
**Catalog #: AMRe01843**



---

## Summary

<b>Production Name</b>	Cyclooxygenase 1 Rabbit Monoclonal antibody
<b>Description</b>	Recombinant Rabbit Monoclonal antibody
<b>Host</b>	Rabbit
<b>Application</b>	WB,IHC-F,IHC-P,ICC/IF,IP
<b>Reactivity</b>	Human,Mouse,Rat

## Performance

<b>Conjugation</b>	Unconjugated
<b>Modification</b>	Unmodified
<b>Isotype</b>	IgG
<b>Clonality</b>	Monoclonal Antibody
<b>Form</b>	Liquid
<b>Storage</b>	Store at 4°C short term. Aliquot and store at -20°C long term. Avoid freeze/thaw cycles.
<b>Buffer</b>	50mM Tris-Glycine(pH 7.4), 0.15M NaCl, 40% Glycerol, 0.01% Sodium azide and 0.05% BSA
<b>Purification</b>	Affinity Purified

## Immunogen

<b>Gene Name</b>	PTGS1
<b>Alternative Names</b>	PTGS1; COX1; Prostaglandin G/H synthase 1; Cyclooxygenase-1; COX-1; Prostaglandin H2 synthase 1; PGH synthase 1; PGHS-1; PHS 1; Prostaglandin-endoperoxide synthase 1
<b>Gene ID</b>	5742
<b>SwissProt ID</b>	P23219.

## Application

<b>Dilution Ratio</b>	WB: 1:500-1:1000 IHC: 1:50-1:100 IF: 1:50-1:200 IP: 1:20
<b>Molecular Weight</b>	Calculated MW: 69 kDa; Observed MW: 69 kDa

**Product Name: Cyclooxygenase 1 Rabbit Monoclonal antibody**  
**Catalog #: AMRe01843**



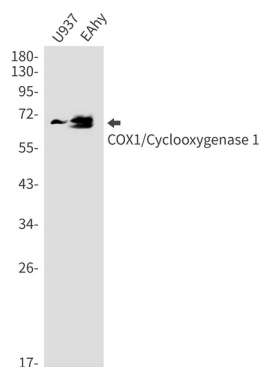
## Background

Cyclooxygenase-1 May play an important role in regulating or promoting cell proliferation in some normal and neoplastically transformed cells. Belongs to the prostaglandin G/H synthase family. Homodimer. 2 isoforms of the human protein are produced by alternative splicing.

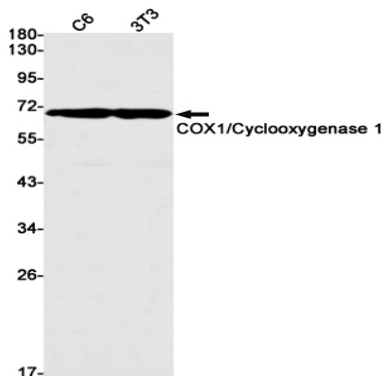
## Research Area

Immunology

## Image Data



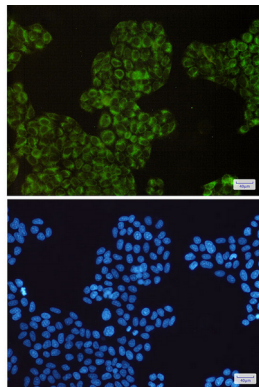
Western blot analysis of COX1/Cyclooxygenase 1 in U937, EAhy lysates using Cyclooxygenase 1 antibody.



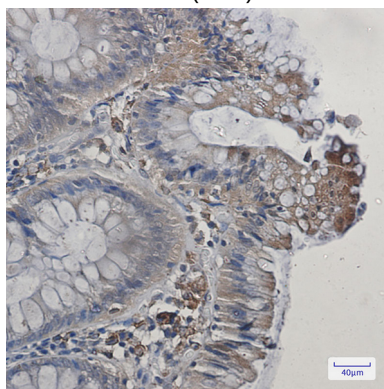
Western blot analysis of COX1/Cyclooxygenase 1 in C6, 3T3 lysates using COX1/Cyclooxygenase 1 antibody.

**Product Name: Cyclooxygenase 1 Rabbit Monoclonal antibody**  
**Catalog #: AMRe01843**

---



Immunocytochemistry analysis of COX1/Cyclooxygenase 1(green) in HeLa using COX1/Cyclooxygenase 1 antibody, and DAPI(blue)



Immunohistochemistry analysis of paraffin-embedded Human colon cancer using COX1/Cyclooxygenase 1 antibody. High-pressure and temperature Sodium Citrate pH 6.0 was used for antigen retrieval.

## **Note**

For research use only.