

Product Name: Claudin 3 Rabbit Monoclonal Antibody
Catalog #: AMRe01831



Summary

| | |
|------------------------|--------------------------------------|
| Production Name | Claudin 3 Rabbit Monoclonal Antibody |
| Description | Rabbit Monoclonal antibody |
| Host | Rabbit |
| Application | WB, ICC/IF, IP |
| Reactivity | Human |

Performance

| | |
|---------------------|--|
| Conjugation | Unconjugated |
| Modification | Unmodified |
| Isotype | IgG |
| Clonality | Monoclonal |
| Form | Liquid |
| Storage | Store at 4°C short term. Aliquot and store at -20°C long term. Avoid freeze/thaw cycles. |
| Buffer | 50mM Tris-Glycine(pH 7.4), 0.15M NaCl, 40% Glycerol, 0.01% Sodium azide and 0.05% BSA |
| Purification | Affinity Purification |

Immunogen

| | |
|--------------------------|-------------------------------------|
| Gene Name | CLDN3 |
| Alternative Names | RVP1; HRVP1; C7orf1; CPE-R2; CPETR2 |
| Gene ID | 1365 |
| SwissProt ID | O15551. |

Application

| | |
|-------------------------|--|
| Dilution Ratio | WB: 1:500-1:1000 IF: 1:50-1:200 IP: 1:20 |
| Molecular Weight | Calculated MW: 23 kDa; Observed MW: 20 kDa |

Background

Plays a major role in tight junction-specific obliteration of the intercellular space, through calcium-independent cell-

Product Name: Claudin 3 Rabbit Monoclonal Antibody
Catalog #: AMRe01831

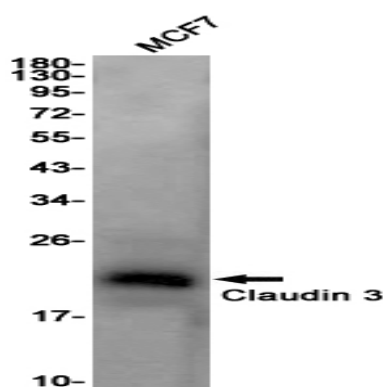


adhesion activity.

Research Area

Cell Biology

Image Data



Western blot analysis of Claudin 3 in MCF-7 lysates using Claudin 3 antibody.

Note

For research use only.