

**Product Name: CD35 Rabbit Monoclonal Antibody**  
**Catalog #: AMRe01791**



## Summary

<b>Production Name</b>	CD35 Rabbit Monoclonal Antibody
<b>Description</b>	Rabbit Monoclonal antibody
<b>Host</b>	Rabbit
<b>Application</b>	WB,IHC-P
<b>Reactivity</b>	Human

## Performance

<b>Conjugation</b>	Unconjugated
<b>Modification</b>	Unmodified
<b>Isotype</b>	IgG
<b>Clonality</b>	Monoclonal
<b>Form</b>	Liquid
<b>Storage</b>	Store at 4°C short term. Aliquot and store at -20°C long term. Avoid freeze/thaw cycles.
<b>Buffer</b>	50mM Tris-Glycine(pH 7.4), 0.15M NaCl, 40% Glycerol, 0.01% Sodium azide and 0.05% BSA
<b>Purification</b>	Affinity Purification

## Immunogen

<b>Gene Name</b>	CR1
<b>Alternative Names</b>	C3 binding protein; C3b/C4b receptor; C3BR; C4BR; CD35; CR1; KN
<b>Gene ID</b>	1378
<b>SwissProt ID</b>	P17927.

## Application

<b>Dilution Ratio</b>	WB: 1:500-1:1000 IHC: 1:50-1:100
<b>Molecular Weight</b>	Calculated MW: 224 kDa; Observed MW: 280 kDa

## Background

Mediates cellular binding of particles and immune complexes that have activated complement.

**Product Name: CD35 Rabbit Monoclonal Antibody**  
**Catalog #: AMRe01791**

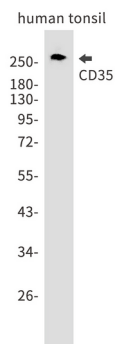
---



## Research Area

Tags & Cell Markers

## Image Data



Western blot analysis of CD35 in Human tonsil lysates using CD35 antibody.

## Note

For research use only.