

**Product Name: Phospho-CD3 zeta (Tyr142) Rabbit Monoclonal Antibody**  
**Catalog #: AMRe01788**

---

## Summary

<b>Production Name</b>	Phospho-CD3 zeta (Tyr142) Rabbit Monoclonal Antibody
<b>Description</b>	Rabbit Monoclonal antibody
<b>Host</b>	Rabbit
<b>Application</b>	WB,IP
<b>Reactivity</b>	Human

## Performance

<b>Conjugation</b>	Unconjugated
<b>Modification</b>	Phosphorylated
<b>Isotype</b>	IgG
<b>Clonality</b>	Monoclonal
<b>Form</b>	Liquid
<b>Storage</b>	Store at 4°C short term. Aliquot and store at -20°C long term. Avoid freeze/thaw cycles.
<b>Buffer</b>	50mM Tris-Glycine(pH 7.4), 0.15M NaCl, 40% Glycerol, 0.01% Sodium azide and 0.05% BSA
<b>Purification</b>	Affinity Purification

## Immunogen

<b>Gene Name</b>	CD247
<b>Alternative Names</b>	CD247; CD3Z; T3Z; TCRZ; T-cell surface glycoprotein CD3 zeta chain; T-cell receptor T3 zeta chain; CD antigen CD247
<b>Gene ID</b>	919
<b>SwissProt ID</b>	P20963.

## Application

<b>Dilution Ratio</b>	WB: 1:500-1:1000 IP: 1:20
<b>Molecular Weight</b>	Calculated MW: 19 kDa; Observed MW: 19 kDa

**Product Name: Phospho-CD3 zeta (Tyr142) Rabbit  
Monoclonal Antibody  
Catalog #: AMRe01788**



## Background

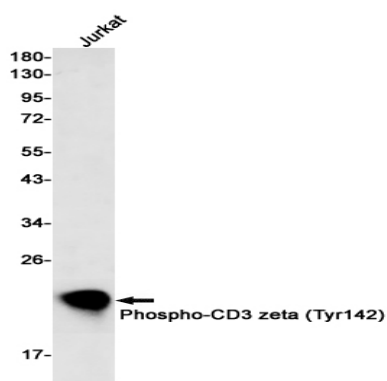
Defects in CD3D are a cause of severe combined immunodeficiency autosomal recessive

T-cell-negative/B-cell-positive/NK-cell-positive (T(-)/B(+)/NK(+)) SCID [MIM:608971]. A form of severe combined immunodeficiency (SCID), a genetically and clinically heterogeneous group of rare congenital disorders characterized by impairment of both humoral and cell-mediated immunity, leukopenia, and low or absent antibody levels.

## Research Area

Immunology

## Image Data



Western blot analysis of Phospho-CD3 zeta (Tyr142) in Jurkat lysates using Phospho-CD3 zeta (Tyr142) antibody.

## Note

For research use only.