

**Product Name: Phospho-CBL (Ser669) Rabbit  
Monoclonal Antibody  
Catalog #: AMRe01770**

---

## Summary

<b>Production Name</b>	Phospho-CBL (Ser669) Rabbit Monoclonal Antibody
<b>Description</b>	Rabbit Monoclonal antibody
<b>Host</b>	Rabbit
<b>Application</b>	WB
<b>Reactivity</b>	Human

## Performance

<b>Conjugation</b>	Unconjugated
<b>Modification</b>	Phosphorylated
<b>Isotype</b>	IgG
<b>Clonality</b>	Monoclonal
<b>Form</b>	Liquid
<b>Storage</b>	Store at 4°C short term. Aliquot and store at -20°C long term. Avoid freeze/thaw cycles.
<b>Buffer</b>	50mM Tris-Glycine(pH 7.4), 0.15M NaCl, 40% Glycerol, 0.01% Sodium azide and 0.05% BSA
<b>Purification</b>	Affinity Purification

## Immunogen

<b>Gene Name</b>	CBL CBL; CBL2; RNF55; E3 ubiquitin-protein ligase CBL; Casitas B-lineage lymphoma proto-oncogene; Proto-oncogene c-Cbl; RING finger protein 55; Signal transduction protein
<b>Alternative Names</b>	CBL
<b>Gene ID</b>	867
<b>SwissProt ID</b>	P22681.

## Application

<b>Dilution Ratio</b>	WB: 1:500-1:1000
<b>Molecular Weight</b>	Calculated MW: 100 kDa; Observed MW: 120 kDa

**Product Name: Phospho-CBL (Ser669) Rabbit  
Monoclonal Antibody  
Catalog #: AMRe01770**

---



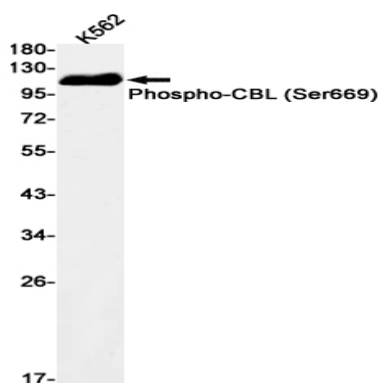
## Background

This gene is a proto-oncogene that encodes a RING finger E3 ubiquitin ligase. The encoded protein is one of the enzymes required for targeting substrates for degradation by the proteasome. This protein mediates the transfer of ubiquitin from ubiquitin conjugating enzymes (E2) to specific substrates. This protein also contains an N-terminal phosphotyrosine binding domain that allows it to interact with numerous tyrosine-phosphorylated substrates and target them for proteasome degradation. As such it functions as a negative regulator of many signal transduction pathways. This gene has been found to be mutated or translocated in many cancers including acute myeloid leukaemia. Mutations in this gene are also the cause of Noonan syndrome-like disorder

## Research Area

Cell Biology

## Image Data



Western blot analysis of Phospho-CBL (Ser669) in K562 lysates using Phospho-CBL (Ser669) antibody.

## Note

For research use only.