

**Product Name: Cleaved-Caspase 3 p17 Rabbit  
Monoclonal Antibody  
Catalog #: AMRe01763**

---

## Summary

<b>Production Name</b>	Cleaved-Caspase 3 p17 Rabbit Monoclonal Antibody
<b>Description</b>	Rabbit Monoclonal antibody
<b>Host</b>	Rabbit
<b>Application</b>	WB
<b>Reactivity</b>	Mouse,Human,Rat

## Performance

<b>Conjugation</b>	Unconjugated
<b>Modification</b>	Cleaved
<b>Isotype</b>	IgG
<b>Clonality</b>	Monoclonal
<b>Form</b>	Liquid
<b>Storage</b>	Store at 4°C short term. Aliquot and store at -20°C long term. Avoid freeze/thaw cycles.
<b>Buffer</b>	50mM Tris-Glycine(pH 7.4), 0.15M NaCl, 40% Glycerol, 0.01% Sodium azide and 0.05% BSA
<b>Purification</b>	Affinity Purification

## Immunogen

<b>Gene Name</b>	CASP3
<b>Alternative Names</b>	CASP3; CPP32; Caspase-3; CASP-3; Apopain; Cysteine protease CPP32; CPP-32; Protein Yama; SREBP cleavage activity 1; SCA-1
<b>Gene ID</b>	836
<b>SwissProt ID</b>	P42574.

## Application

<b>Dilution Ratio</b>	WB: 1:500-1:1000
<b>Molecular Weight</b>	Calculated MW: 32 kDa; Observed MW: 32,17 kDa

**Product Name: Cleaved-Caspase 3 p17 Rabbit  
Monoclonal Antibody  
Catalog #: AMRe01763**

---

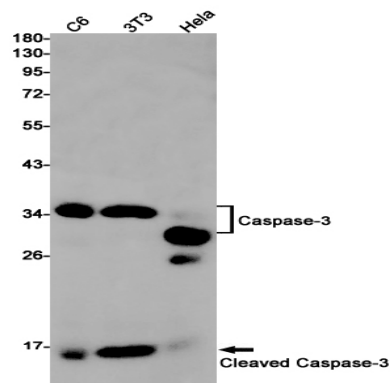
## Background

Sequential activation of caspases plays a central role in the execution-phase of cell apoptosis. Caspases exist as inactive proenzymes which undergo proteolytic processing at conserved aspartic residues to produce 2 subunits, large and small, that dimerize to form the active enzyme.

## Research Area

Cell Biology

## Image Data



Western blot analysis of Caspase3 in C6, 3T3, HeLa lysates using Cleaved-Caspase 3 p17 antibody.

## Note

For research use only.