

Product Name: BMP2 Rabbit Monoclonal Antibody
Catalog #: AMRe01730



Summary

Production Name	BMP2 Rabbit Monoclonal Antibody
Description	Rabbit Monoclonal antibody
Host	Rabbit
Application	WB, ICC/IF
Reactivity	Human

Performance

Conjugation	Unconjugated
Modification	Unmodified
Isotype	IgG
Clonality	Monoclonal
Form	Liquid
Storage	Store at 4°C short term. Aliquot and store at -20°C long term. Avoid freeze/thaw cycles.
Buffer	50mM Tris-Glycine(pH 7.4), 0.15M NaCl, 40% Glycerol, 0.01% Sodium azide and 0.05% BSA
Purification	Affinity Purification

Immunogen

Gene Name	BMP2
Alternative Names	BMP2; BMP2A; Bone morphogenetic protein 2; BMP-2; Bone morphogenetic protein 2A; BMP-2A
Gene ID	650
SwissProt ID	P12643.

Application

Dilution Ratio	WB: 1:500-1:1000 IF: 1:50-1:200
Molecular Weight	Calculated MW: 45 kDa; Observed MW: 30 kDa

Background

Product Name: BMP2 Rabbit Monoclonal Antibody
Catalog #: AMRe01730

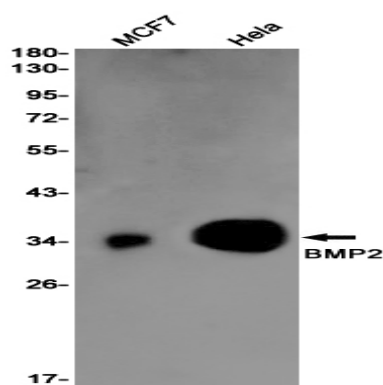


Bone morphogenic proteins (BMPs) are members of the TGF β superfamily. BMPs are involved in the induction of cartilage and bone formation. Induces cartilage and bone formation.

Research Area

Cancer

Image Data



Western blot analysis of BMP2 in MCF-7, HeLa lysates using BMP2 antibody.

Note

For research use only.