

**Product Name: BAT3 Rabbit Monoclonal antibody**  
**Catalog #: AMRe01717**



## Summary

<b>Production Name</b>	BAT3 Rabbit Monoclonal antibody
<b>Description</b>	Recombinant Rabbit Monoclonal antibody
<b>Host</b>	Rabbit
<b>Application</b>	WB, ICC/IF
<b>Reactivity</b>	Human, Mouse, Rat

## Performance

<b>Conjugation</b>	Unconjugated
<b>Modification</b>	Unmodified
<b>Isotype</b>	IgG
<b>Clonality</b>	Monoclonal Antibody
<b>Form</b>	Liquid
<b>Storage</b>	Store at 4°C short term. Aliquot and store at -20°C long term. Avoid freeze/thaw cycles.
<b>Buffer</b>	50mM Tris-Glycine(pH 7.4), 0.15M NaCl, 40% Glycerol, 0.01% Sodium azide and 0.05% BSA
<b>Purification</b>	Affinity Purified

## Immunogen

<b>Gene Name</b>	BAG6
<b>Alternative Names</b>	BAG6; BAT 3; Scythe
<b>Gene ID</b>	7917
<b>SwissProt ID</b>	P46379.

## Application

<b>Dilution Ratio</b>	WB: 1:500-1:1000 IF: 1:50-1:200
<b>Molecular Weight</b>	Calculated MW: 119 kDa; Observed MW: 150 kDa

## Background

**Product Name: BAT3 Rabbit Monoclonal antibody**  
**Catalog #: AMRe01717**

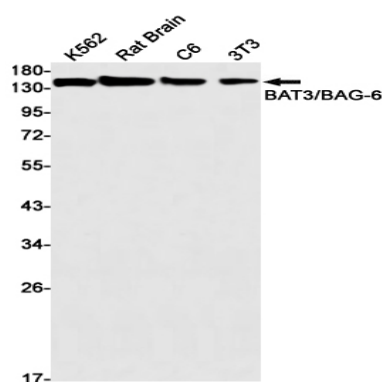


Chaperone that plays a key role in various processes such as apoptosis, insertion of tail-anchored (TA) membrane proteins to the endoplasmic reticulum membrane and regulation of chromatin. Acts in part by regulating stability of proteins and their degradation by the proteasome. Participates in endoplasmic reticulum stress-induced apoptosis via its interaction with AIFM1/AIF by regulating AIFM1/AIF stability and preventing its degradation.

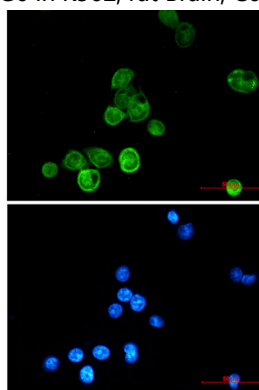
## Research Area

Cell Biology

## Image Data



Western blot analysis of BAT3/BAG6 in K562, rat Brain, C6, 3T3 lysates using BAT3 antibody.



Immunocytochemistry analysis of BAT3/BAG6 (green) in MCF-7 using BAT3/BAG6 antibody, and DAPI (blue)

## Note

For research use only.