

**Product Name: ARPC2 Rabbit Monoclonal Antibody**  
**Catalog #: AMRe01677**



## Summary

<b>Production Name</b>	ARPC2 Rabbit Monoclonal Antibody
<b>Description</b>	Rabbit Monoclonal antibody
<b>Host</b>	Rabbit
<b>Application</b>	WB,IHC-F,IHC-P,ICC/IF,IP
<b>Reactivity</b>	Human,Mouse,Rat

## Performance

<b>Conjugation</b>	Unconjugated
<b>Modification</b>	Unmodified
<b>Isotype</b>	IgG
<b>Clonality</b>	Monoclonal
<b>Form</b>	Liquid
<b>Storage</b>	Store at 4°C short term. Aliquot and store at -20°C long term. Avoid freeze/thaw cycles.
<b>Buffer</b>	50mM Tris-Glycine(pH 7.4), 0.15M NaCl, 40% Glycerol, 0.01% Sodium azide and 0.05% BSA
<b>Purification</b>	Affinity Purification

## Immunogen

<b>Gene Name</b>	ARPC2
<b>Alternative Names</b>	ARC34; PRO2446; p34-Arc; PNAS-139
<b>Gene ID</b>	10109
<b>SwissProt ID</b>	O15144.

## Application

<b>Dilution Ratio</b>	WB: 1:500-1:1000 IHC: 1:50-1:100 IF: 1:50-1:200 IP: 1:20
<b>Molecular Weight</b>	Calculated MW: 34 kDa; Observed MW: 34 kDa

## Background

**Product Name: ARPC2 Rabbit Monoclonal Antibody**  
**Catalog #: AMRe01677**

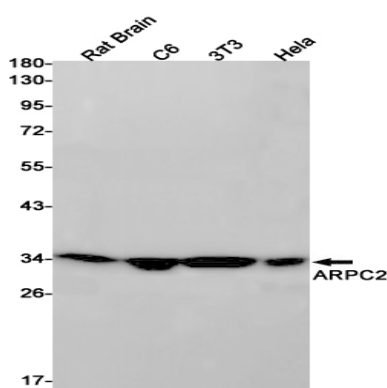


Functions as actin-binding component of the Arp2/3 complex which is involved in regulation of actin polymerization and together with an activating nucleation-promoting factor (NPF) mediates the formation of branched actin networks. Seems to contact the mother actin filament.

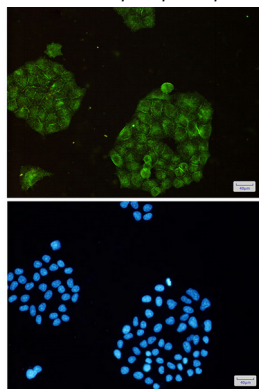
## Research Area

Signal Transduction

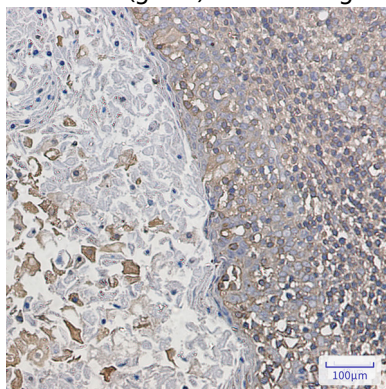
## Image Data



Western blot analysis of ARPC2 in rat Brain, C6, 3T3, HeLa lysates using ARPC2 antibody.



Immunocytochemistry analysis of ARPC2 (green) in HeLa using ARPC2 antibody, and DAPI (blue)



Immunohistochemistry analysis of paraffin-embedded Human tonsil using ARPC2 antibody. High-pressure and temperature

**Product Name: ARPC2 Rabbit Monoclonal Antibody**  
**Catalog #: AMRe01677**

---



Sodium Citrate pH 6.0 was used for antigen retrieval.

**Note**

For research use only.