

**Product Name: Phospho-AP2M1 (Thr156) Rabbit Monoclonal Antibody**  
**Catalog #: AMRe01657**

---

## Summary

<b>Production Name</b>	Phospho-AP2M1 (Thr156) Rabbit Monoclonal Antibody
<b>Description</b>	Rabbit Monoclonal antibody
<b>Host</b>	Rabbit
<b>Application</b>	WB
<b>Reactivity</b>	Human

## Performance

<b>Conjugation</b>	Unconjugated
<b>Modification</b>	Phosphorylated
<b>Isotype</b>	IgG
<b>Clonality</b>	Monoclonal
<b>Form</b>	Liquid
<b>Storage</b>	Store at 4°C short term. Aliquot and store at -20°C long term. Avoid freeze/thaw cycles.
<b>Buffer</b>	50mM Tris-Glycine(pH 7.4), 0.15M NaCl, 40% Glycerol, 0.01% Sodium azide and 0.05% BSA
<b>Purification</b>	Affinity Purification

## Immunogen

<b>Gene Name</b>	AP2M1 AP-2 complex subunit mu; AP-2 mu chain; Adapter-related protein complex 2 subunit mu;
<b>Alternative Names</b>	Adaptin-mu2; Clathrin assembly protein complex 2 mu medium chain; Clathrin coat assembly protein AP50
<b>Gene ID</b>	1173
<b>SwissProt ID</b>	Q96CW1.

## Application

<b>Dilution Ratio</b>	WB: 1:500-1:1000
<b>Molecular Weight</b>	Calculated MW: 50 kDa; Observed MW: 50 kDa

**Product Name: Phospho-AP2M1 (Thr156) Rabbit  
Monoclonal Antibody**  
**Catalog #: AMRe01657**

---



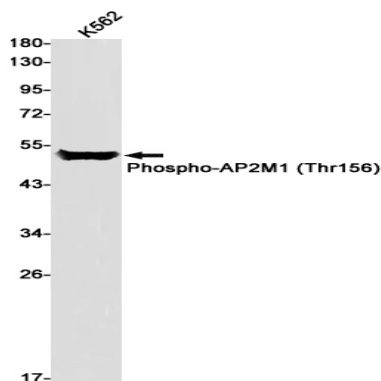
## Background

Adaptins are heterotetrameric subunits of adaptors, which are complexes involved in the formation of Clathrin-coated pits for vesicle-mediated endocytosis. Involved in clathrin-dependent endocytosis in which cargo proteins are incorporated into vesicles surrounded by clathrin (clathrin-coated vesicles, CCVs) which are destined for fusion with the early endosome.

## Research Area

Signal Transduction

## Image Data



Western blot analysis of Phospho-AP2M1 (Thr156) in K562 lysates using Phospho-AP2M1 (Thr156) antibody.

## Note

For research use only.