

**Product Name: Annexin A2 Rabbit Monoclonal antibody**  
**Catalog #: AMRe01650**



## Summary

<b>Production Name</b>	Annexin A2 Rabbit Monoclonal antibody
<b>Description</b>	Recombinant Rabbit Monoclonal antibody
<b>Host</b>	Rabbit
<b>Application</b>	WB, ICC/IF
<b>Reactivity</b>	Human, Mouse, Rat

## Performance

<b>Conjugation</b>	Unconjugated
<b>Modification</b>	Unmodified
<b>Isotype</b>	IgG
<b>Clonality</b>	Monoclonal Antibody
<b>Form</b>	Liquid
<b>Storage</b>	Store at 4°C short term. Aliquot and store at -20°C long term. Avoid freeze/thaw cycles.
<b>Buffer</b>	50mM Tris-Glycine(pH 7.4), 0.15M NaCl, 40% Glycerol, 0.01% Sodium azide and 0.05% BSA
<b>Purification</b>	Affinity Purified

## Immunogen

<b>Gene Name</b>	ANXA2 ANXA2; ANX2; ANX2L4; CAL1H; LPC2D; Annexin A2; Annexin II; Annexin-2; Calpactin I
<b>Alternative Names</b>	heavy chain; Calpactin-1 heavy chain; Chromobindin-8; Lipocortin II; Placental anticoagulant protein IV; PAP-IV; Protein I; p36
<b>Gene ID</b>	302
<b>SwissProt ID</b>	P07355.

## Application

<b>Dilution Ratio</b>	WB: 1:500-1:1000 IF: 1:50-1:200
<b>Molecular Weight</b>	Calculated MW: 39 kDa; Observed MW: 39 kDa



**Product Name: Annexin A2 Rabbit Monoclonal antibody**  
**Catalog #: AMRe01650**



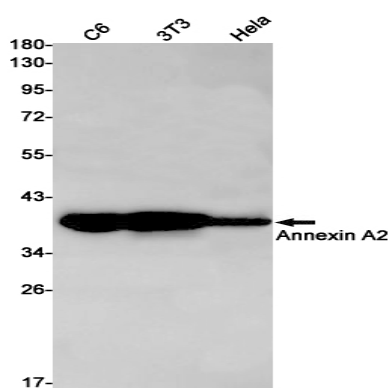
## Background

Originally identified as a protein inhibitor of phospholipase A2, annexin A2 has subsequently been shown to interact with an array of protein and non-protein partners, including F-actin, spectrin, SNARE complexes, RNA, and virus particles.

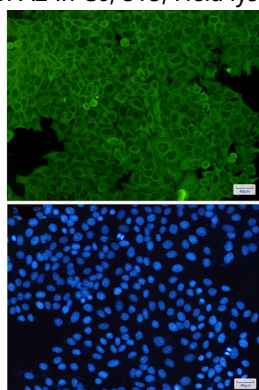
## Research Area

Signal Transduction

## Image Data



Western blot analysis of Annexin A2 in C6, 3T3, HeLa lysates using Annexin A2 antibody.



Immunocytochemistry analysis of Annexin A2(green) in HeLa using Annexin A2 antibody, and DAPI(blue)

## Note

For research use only.