

Product Name: Phospho-Glutamate Receptor 1 (AMPA Subtype) (Ser845) Rabbit Monoclonal Antibody
Catalog #: AMRe01642



Summary

Production Name	Phospho-Glutamate Receptor 1 (AMPA Subtype) (Ser845) Rabbit Monoclonal Antibody
Description	Rabbit Monoclonal antibody
Host	Rabbit
Application	WB
Reactivity	Human,Rat

Performance

Conjugation	Unconjugated
Modification	Phosphorylated
Isotype	IgG
Clonality	Monoclonal
Form	Liquid
Storage	Store at 4°C short term. Aliquot and store at -20°C long term. Avoid freeze/thaw cycles.
Buffer	50mM Tris-Glycine(pH 7.4), 0.15M NaCl, 40% Glycerol, 0.01% Sodium azide and 0.05% BSA
Purification	Affinity Purification

Immunogen

Gene Name	GRIA1
Alternative Names	GRIA1; GLUH1; GLUR1; Glutamate receptor 1; GluR-1; AMPA-selective glutamate receptor 1; GluR-A; GluR-K1; Glutamate receptor ionotropic; AMPA 1; GluA1
Gene ID	2890
SwissProt ID	P42261.

Application

Dilution Ratio	WB: 1:500-1:1000
Molecular Weight	Calculated MW: 102 kDa; Observed MW: 102 kDa

Product Name: Phospho-Glutamate Receptor 1 (AMPA Subtype) (Ser845) Rabbit Monoclonal Antibody
Catalog #: AMRe01642



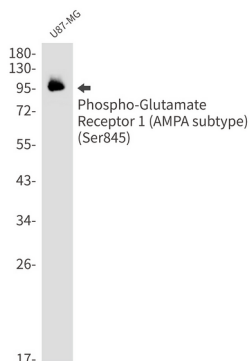
Background

AMPA- (α -amino-3-hydroxy-5-methyl-4-isoxazolepropionic acid), kainate-, and NMDA- (N-methyl-D-aspartate) receptors are the three main families of ionotropic glutamate-gated ion channels. AMPA receptors (AMPARs) are comprised of four subunits (GluR 1-4), which assemble as homo- or hetero-tetramers to mediate the majority of fast excitatory transmissions in the central nervous system. AMPARs are implicated in synapse formation, stabilization, and plasticity.

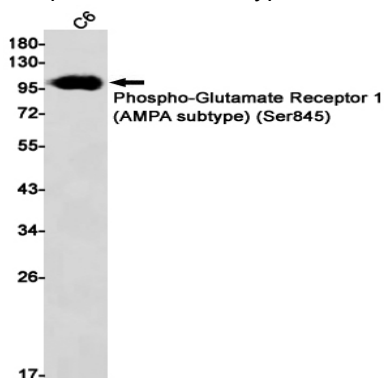
Research Area

Neuroscience

Image Data



Western blot analysis of Phospho-Glutamate Receptor 1 (AMPA subtype) (Ser845) in U87-MG lysates using Phospho-Glutamate Receptor 1 (AMPA Subtype) (Ser845) antibody.



Western blot analysis of Phospho-Glutamate Receptor 1 (AMPA subtype) (Ser845) in C6 lysates using Phospho-Glutamate Receptor 1 (AMPA subtype) (Ser845) antibody.



**Product Name: Phospho-Glutamate Receptor 1 (AMPA
Subtype) (Ser845) Rabbit Monoclonal Antibody**
Catalog #: AMRe01642

Note

For research use only.