

Product Name: ADRM1 Rabbit Monoclonal Antibody
Catalog #: AMRe01616



Summary

Production Name	ADRM1 Rabbit Monoclonal Antibody
Description	Rabbit Monoclonal antibody
Host	Rabbit
Application	WB,IHC-F,IHC-P,ICC/IF,IP
Reactivity	Human

Performance

Conjugation	Unconjugated
Modification	Unmodified
Isotype	IgG
Clonality	Monoclonal
Form	Liquid
Storage	Store at 4°C short term. Aliquot and store at -20°C long term. Avoid freeze/thaw cycles.
Buffer	50mM Tris-Glycine(pH 7.4), 0.15M NaCl, 40% Glycerol, 0.01% Sodium azide and 0.05% BSA
Purification	Affinity Purification

Immunogen

Gene Name	ADRM1
Alternative Names	ARM1; ARM-1; GP110
Gene ID	11047
SwissProt ID	Q16186.

Application

Dilution Ratio	WB: 1:500-1:1000 IHC: 1:50-1:100 IF: 1:50-1:200 IP: 1:20
Molecular Weight	Calculated MW: 42 kDa; Observed MW: 42 kDa

Background

Product Name: ADRM1 Rabbit Monoclonal Antibody
Catalog #: AMRe01616

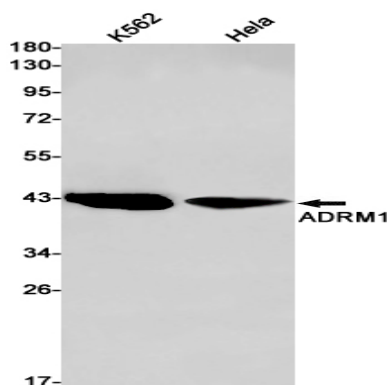


Component of the 26S proteasome, a multiprotein complex involved in the ATP-dependent degradation of ubiquitinated proteins. This complex plays a key role in the maintenance of protein homeostasis by removing misfolded or damaged proteins, which could impair cellular functions, and by removing proteins whose functions are no longer required. Therefore, the proteasome participates in numerous cellular processes, including cell cycle progression, apoptosis, or DNA damage repair. Within the complex, functions as a proteasomal ubiquitin receptor. Engages and activates 19S-associated deubiquitinases UCHL5 and PSMD14 during protein degradation. UCHL5 reversibly associate with the 19S regulatory particle whereas PSMD14 is an intrinsic subunit of the proteasome lid subcomplex.

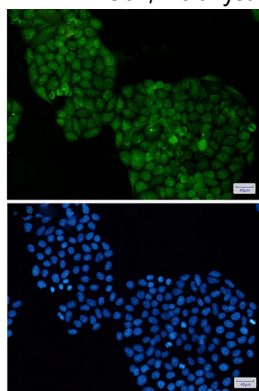
Research Area

Signal Transduction

Image Data

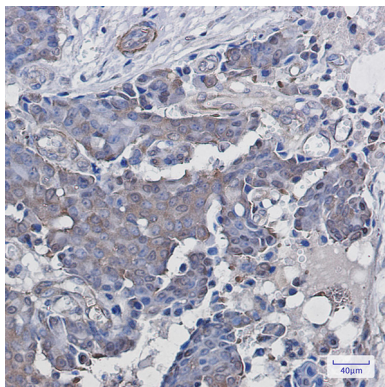


Western blot analysis of ADRM1 in K562, HeLa lysates using ADRM1 antibody.



Immunocytochemistry analysis of ADRM1(green) in HeLa using ADRM1 antibody, and DAPI(blue)

Product Name: ADRM1 Rabbit Monoclonal Antibody
Catalog #: AMRe01616



Immunohistochemistry analysis of paraffin-embedded Human breast cancer using ADRM1 antibody. High-pressure and temperature Sodium Citrate pH 6.0 was used for antigen retrieval.

Note

For research use only.