

**Product Name: 67kDa Laminin Receptor Rabbit  
Monoclonal antibody  
Catalog #: AMRe01595**

---

## Summary

<b>Production Name</b>	67kDa Laminin Receptor Rabbit Monoclonal antibody
<b>Description</b>	Recombinant Rabbit Monoclonal antibody
<b>Host</b>	Rabbit
<b>Application</b>	WB,IP
<b>Reactivity</b>	Human,Mouse,Rat

## Performance

<b>Conjugation</b>	Unconjugated
<b>Modification</b>	Unmodified
<b>Isotype</b>	IgG
<b>Clonality</b>	Monoclonal Antibody
<b>Form</b>	Liquid
<b>Storage</b>	Store at 4°C short term. Aliquot and store at -20°C long term. Avoid freeze/thaw cycles.
<b>Buffer</b>	50mM Tris-Glycine(pH 7.4), 0.15M NaCl, 40% Glycerol, 0.01% Sodium azide and 0.05% BSA
<b>Purification</b>	Affinity Purified

## Immunogen

<b>Gene Name</b>	RPSA
<b>Alternative Names</b>	SA; LBP; LRP; p40; 67LR; ICAS; lamR; 37LRP; LAMBR; LAMR1; LRP/LR; LBP/p40; NEM/1CHD4
<b>Gene ID</b>	3921
<b>SwissProt ID</b>	P08865.

## Application

<b>Dilution Ratio</b>	WB: 1:500-1:1000 IP: 1:20
<b>Molecular Weight</b>	Calculated MW: 33 kDa; Observed MW: 40 kDa

**Product Name: 67kDa Laminin Receptor Rabbit  
Monoclonal antibody  
Catalog #: AMRe01595**



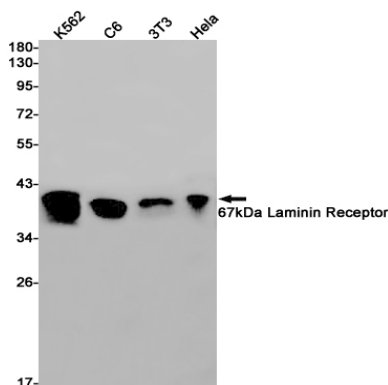
## Background

Required for the assembly and/or stability of the 40S ribosomal subunit. Required for the processing of the 20S rRNA-precursor to mature 18S rRNA in a late step of the maturation of 40S ribosomal subunits. Also functions as a cell surface receptor for laminin. Plays a role in cell adhesion to the basement membrane and in the consequent activation of signaling transduction pathways.

## Research Area

Cardiovascular

## Image Data



Western blot analysis of 67kDa Laminin Receptor in K562, C6, 3T3, HeLa lysates using 67kDa Laminin Receptor antibody.

## Note

For research use only.