

**Product Name: VCAM1 Rabbit Monoclonal Antibody**  
**Catalog #: AMRe01570**

---



## Summary

|                        |                                  |
|------------------------|----------------------------------|
| <b>Production Name</b> | VCAM1 Rabbit Monoclonal Antibody |
| <b>Description</b>     | Rabbit Monoclonal antibody       |
| <b>Host</b>            | Rabbit                           |
| <b>Application</b>     | WB,IHC-P,IP                      |
| <b>Reactivity</b>      | Human,Mouse,Rat                  |

## Performance

|                     |  |
|---------------------|--|
| <b>Conjugation</b>  | Unconjugated   |
| <b>Modification</b> | Unmodified   |
| <b>Isotype</b>      | IgG  |
| <b>Clonality</b>    | Monoclonal   |
| <b>Form</b>         | Liquid   |
| <b>Storage</b>      | Store at 4°C short term. Aliquot and store at -20°C long term. Avoid freeze/thaw cycles. |
| <b>Buffer</b>       | 50mM Tris-Glycine(pH 7.4), 0.15M NaCl, 40% Glycerol, 0.01% Sodium azide and 0.05% BSA    |
| <b>Purification</b> | Affinity Purification  |

## Immunogen

|                          |  |
|--------------------------|--|
| <b>Gene Name</b>         | VCAM1  |
| <b>Alternative Names</b> | VCAM1; L1CAM; Vascular cell adhesion protein 1; V-CAM 1; VCAM-1; INCAM-100; CD antigen CD106 |
| <b>Gene ID</b>           | 7412   |
| <b>SwissProt ID</b>      | P19320.  |

## Application

|                         |   |
|-------------------------|---|
| <b>Dilution Ratio</b>   | WB: 1:500-1:1000 IHC: 1:50-1:100 IP: 1:20   |
| <b>Molecular Weight</b> | Calculated MW: 81 kDa; Observed MW: 110 kDa |

**Product Name: VCAM1 Rabbit Monoclonal Antibody**  
**Catalog #: AMRe01570**



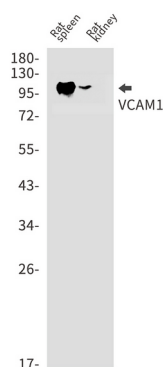
## Background

This gene is a member of the Ig superfamily and encodes a cell surface sialoglycoprotein expressed by cytokine-activated endothelium. This type I membrane protein mediates leukocyte-endothelial cell adhesion and signal transduction, and may play a role in the development of atherosclerosis and rheumatoid arthritis. Two alternatively spliced transcripts encoding different isoforms have been described for this gene. Tissue specificity:

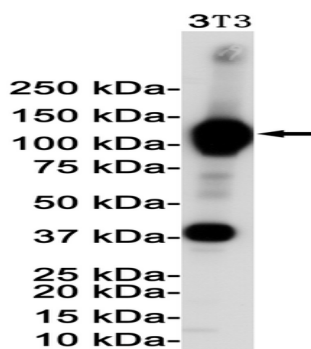
## Research Area

Signal Transduction

## Image Data



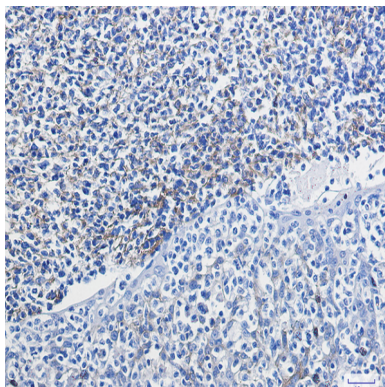
Western blot analysis of VCAM1 in rat spleen, rat kidney lysates using VCAM1 antibody.



Western blot analysis of VCAM1 in 3T3 lysates using VCAM1 antibody.

**Product Name: VCAM1 Rabbit Monoclonal Antibody**  
**Catalog #: AMRe01570**

---



Immunohistochemistry analysis of paraffin-embedded Human tonsil using VCAM1 antibody. High-pressure and temperature Sodium Citrate pH 6.0 was used for antigen retrieval.

**Note**

For research use only.