

Product Name: ATM Rabbit Monoclonal Antibody
Catalog #: AMRe01569



Summary

Production Name	ATM Rabbit Monoclonal Antibody
Description	Rabbit Monoclonal antibody
Host	Rabbit
Application	WB,IP,ChIP
Reactivity	Human

Performance

Conjugation	Unconjugated
Modification	Unmodified
Isotype	IgG
Clonality	Monoclonal
Form	Liquid
Storage	Store at 4°C short term. Aliquot and store at -20°C long term. Avoid freeze/thaw cycles.
Buffer	50mM Tris-Glycine(pH 7.4), 0.15M NaCl, 40% Glycerol, 0.01% Sodium azide and 0.05% BSA
Purification	Affinity Purification

Immunogen

Gene Name	ATM
Alternative Names	ATM; Serine-protein kinase ATM; Ataxia telangiectasia mutated; A-T mutated
Gene ID	472
SwissProt ID	Q13315.

Application

Dilution Ratio	WB: 1:500-1:1000 IP: 1:20 ChIP: 1:20
Molecular Weight	Calculated MW: 351 kDa; Observed MW: 351 kDa

Background

The protein encoded by this gene belongs to the PI3/PI4-kinase family. This protein is an important cell cycle checkpoint

Product Name: ATM Rabbit Monoclonal Antibody
Catalog #: AMRe01569

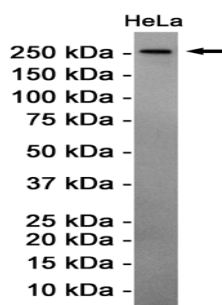


kinase that phosphorylates; thus, it functions as a regulator of a wide variety of downstream proteins, including tumor suppressor proteins p53 and BRCA1, checkpoint kinase CHK2, checkpoint proteins RAD17 and RAD9, and DNA repair protein NBS1. This protein and the closely related kinase ATR are thought to be master controllers of cell cycle checkpoint signaling pathways that are required for cell response to DNA damage and for genome stability.

Research Area

Epigenetics and Nuclear Signaling

Image Data



Western blot analysis of ATM in HeLa lysates using ATM antibody.

Note

For research use only.