

Product Name: CD11b Rabbit Monoclonal Antibody
Catalog #: AMRe01561



Summary

Production Name	CD11b Rabbit Monoclonal Antibody
Description	Rabbit Monoclonal antibody
Host	Rabbit
Application	WB,IP
Reactivity	Mouse

Performance

Conjugation	Unconjugated
Modification	Unmodified
Isotype	IgG
Clonality	Monoclonal
Form	Liquid
Storage	Store at 4°C short term. Aliquot and store at -20°C long term. Avoid freeze/thaw cycles.
Buffer	50mM Tris-Glycine(pH 7.4), 0.15M NaCl, 40% Glycerol, 0.01% Sodium azide and 0.05% BSA
Purification	Affinity Purification

Immunogen

Gene Name	Itgam
Alternative Names	CD11 antigen-like family member B; CR-3 alpha chain; Cell surface glycoprotein MAC-1 subunit alpha; CD11b; Leukocyte adhesion receptor MO1
Gene ID	16409.0
SwissProt ID	P05555.

Application

Dilution Ratio	WB: 1:500-1:1000 IP: 1:20
Molecular Weight	Calculated MW: 127 kDa; Observed MW: 170 kDa

Background

Product Name: CD11b Rabbit Monoclonal Antibody
Catalog #: AMRe01561

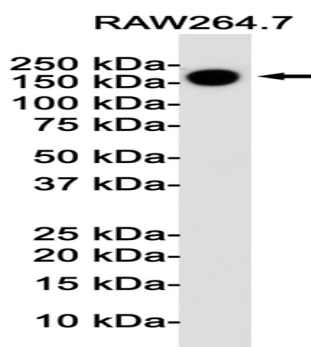


Integrin ITGAM/ITGB2 is implicated in various adhesive interactions of monocytes, macrophages and granulocytes as well as in mediating the uptake of complement-coated particles and pathogens.

Research Area

Neuroscience

Image Data



Western blot analysis of CD11b in Raw264.7 lysates using CD11b antibody.

Note

For research use only.