

**Product Name: ENO1 Rabbit Monoclonal Antibody**  
**Catalog #: AMRe01559**



## Summary

<b>Production Name</b>	ENO1 Rabbit Monoclonal Antibody
<b>Description</b>	Rabbit Monoclonal antibody
<b>Host</b>	Rabbit
<b>Application</b>	WB, ICC/IF, IP
<b>Reactivity</b>	Human, Mouse, Rat

## Performance

<b>Conjugation</b>	Unconjugated
<b>Modification</b>	Unmodified
<b>Isotype</b>	IgG
<b>Clonality</b>	Monoclonal
<b>Form</b>	Liquid
<b>Storage</b>	Store at 4°C short term. Aliquot and store at -20°C long term. Avoid freeze/thaw cycles.
<b>Buffer</b>	50mM Tris-Glycine(pH 7.4), 0.15M NaCl, 40% Glycerol, 0.01% Sodium azide and 0.05% BSA
<b>Purification</b>	Affinity Purification

## Immunogen

<b>Gene Name</b>	ENO1
<b>Alternative Names</b>	NNE; PPH; MPB1; ENO1L1; HEL-S-17
<b>Gene ID</b>	2023
<b>SwissProt ID</b>	P06733.

## Application

<b>Dilution Ratio</b>	WB: 1:500-1:1000 IF: 1:50-1:200 IP: 1:20
<b>Molecular Weight</b>	Calculated MW: 47 kDa; Observed MW: 47 kDa

## Background

**Product Name: ENO1 Rabbit Monoclonal Antibody**  
**Catalog #: AMRe01559**

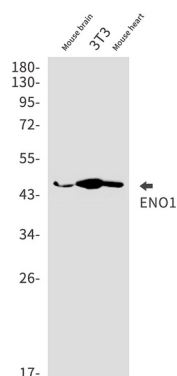


Multifunctional enzyme that, as well as its role in glycolysis, plays a part in various processes such as growth control, hypoxia tolerance and allergic responses. May also function in the intravascular and pericellular fibrinolytic system due to its ability to serve as a receptor and activator of plasminogen on the cell surface of several cell-types such as leukocytes and neurons. Stimulates immunoglobulin production. MBP1 binds to the myc promoter and acts as a transcriptional repressor. May be a tumor suppressor. Miscellaneous Used as a diagnostic marker for many tumors and, in the heterodimeric form, alpha/gamma, as a marker for hypoxic brain injury after cardiac arrest. Also marker for endometriosis. Antibodies against alpha-enolase are present in sera from patients with cancer-associated retinopathy syndrome (CAR), a progressive blinding disease which occurs in the presence of systemic tumor growth, primarily small-cell carcinoma of the lung and other malignancies. Is identified as an autoantigen in Hashimoto encephalopathy (HE) a rare autoimmune disease associated with Hashimoto thyroiditis (HT). HT is a disorder in which destructive processes overcome the potential capacity of thyroid replacement leading to hypothyroidism.

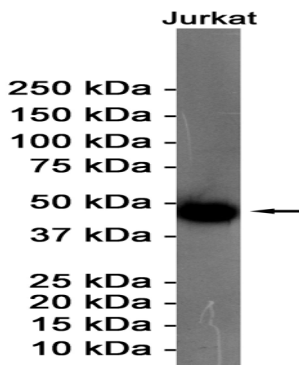
## Research Area

Signal Transduction

## Image Data

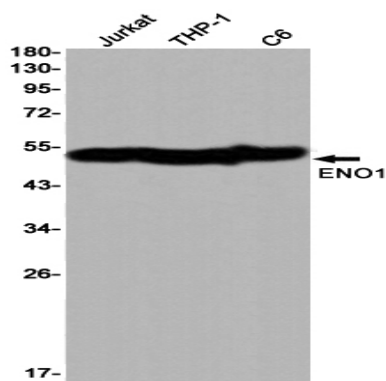


Western blot analysis of ENO1 in mouse brain, 3T3, mouse heart lysates using ENO1 antibody.

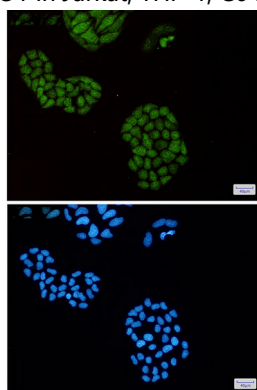


Western blot analysis of ENO1 in Jurkat lysates using ENO1 antibody.

**Product Name: ENO1 Rabbit Monoclonal Antibody**  
**Catalog #: AMRe01559**



Western blot analysis of ENO1 in Jurkat, THP-1, C6 lysates using ENO1 antibody



Immunocytochemistry analysis of ENO1(green) in Hela using ENO1 antibody, and DAPI(blue).

## **Note**

For research use only.