

**Product Name: Phospho-eIF2A (Ser51) Rabbit  
Monoclonal Antibody  
Catalog #: AMRe01552**

---

## Summary

<b>Production Name</b>	Phospho-eIF2A (Ser51) Rabbit Monoclonal Antibody
<b>Description</b>	Rabbit Monoclonal antibody
<b>Host</b>	Rabbit
<b>Application</b>	WB
<b>Reactivity</b>	Human,Mouse,Rat

## Performance

<b>Conjugation</b>	Unconjugated
<b>Modification</b>	Phosphorylated
<b>Isotype</b>	IgG
<b>Clonality</b>	Monoclonal
<b>Form</b>	Liquid
<b>Storage</b>	Store at 4°C short term. Aliquot and store at -20°C long term. Avoid freeze/thaw cycles.
<b>Buffer</b>	50mM Tris-Glycine(pH 7.4), 0.15M NaCl, 40% Glycerol, 0.01% Sodium azide and 0.05% BSA
<b>Purification</b>	Affinity Purification

## Immunogen

<b>Gene Name</b>	EIF2S1
<b>Alternative Names</b>	EIF2S1; EIF2A; Eukaryotic translation initiation factor 2 subunit 1; Eukaryotic translation initiation factor 2 subunit alpha; eIF-2-alpha; eIF-2A; eIF-2alpha
<b>Gene ID</b>	1965
<b>SwissProt ID</b>	P05198.

## Application

<b>Dilution Ratio</b>	WB: 1:500-1:1000
<b>Molecular Weight</b>	Calculated MW: 36 kDa; Observed MW: 36 kDa

**Product Name: Phospho-eIF2A (Ser51) Rabbit  
Monoclonal Antibody  
Catalog #: AMRe01552**



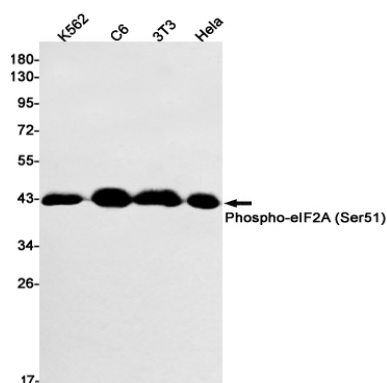
## Background

eIF2A a translation initiation factor that functions in the early steps of protein synthesis by forming a ternary complex with GTP and initiator tRNA. This complex binds to a 40s ribosomal subunit, followed by mRNA binding to form a 43S preinitiation complex.

## Research Area

Epigenetics and Nuclear Signaling

## Image Data



Western blot analysis of Phospho-eIF2A (Ser51) in K562, C6, 3T3, HeLa lysates using Phospho-eIF2A (Ser51) antibody.

## Note

For research use only.