

**Product Name: Phospho-Nrf2 (Ser40) Rabbit
Monoclonal antibody
Catalog #: AMRe01540**

Summary

Production Name	Phospho-Nrf2 (Ser40) Rabbit Monoclonal antibody
Description	Recombinant Rabbit Monoclonal antibody
Host	Rabbit
Application	WB,IHC-P
Reactivity	Human

Performance

Conjugation	Unconjugated
Modification	Phosphorylated
Isotype	IgG
Clonality	Monoclonal Antibody
Form	Liquid
Storage	Store at 4°C short term. Aliquot and store at -20°C long term. Avoid freeze/thaw cycles.
Buffer	50mM Tris-Glycine(pH 7.4), 0.15M NaCl, 40% Glycerol, 0.01% Sodium azide and 0.05% BSA
Purification	Affinity Purified

Immunogen

Gene Name	NFE2L2
Alternative Names	NFE2L2; NRF2; Nuclear factor erythroid 2-related factor 2; NF-E2-related factor 2; NFE2-related factor 2; HEBP1; Nuclear factor; erythroid derived 2; like 2
Gene ID	4780
SwissProt ID	Q16236.

Application

Dilution Ratio	WB: 1:500-1:1000 IHC: 1:50-1:100
Molecular Weight	Calculated MW: 68 kDa; Observed MW: 100 kDa

**Product Name: Phospho-Nrf2 (Ser40) Rabbit
Monoclonal antibody
Catalog #: AMRe01540**

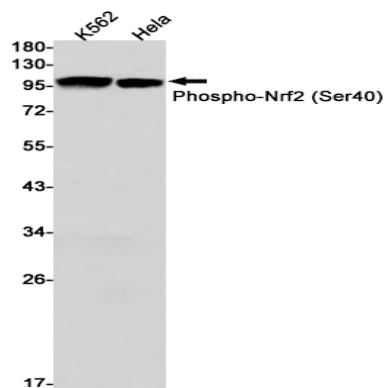
Background

Transcription activator that binds to antioxidant response (ARE) elements in the promoter regions of target genes. Important for the coordinated up-regulation of genes in response to oxidative stress. May be involved in the transcriptional activation of genes of the beta-globin cluster by mediating enhancer activity of hypersensitive site 2 of the beta-globin locus control region.

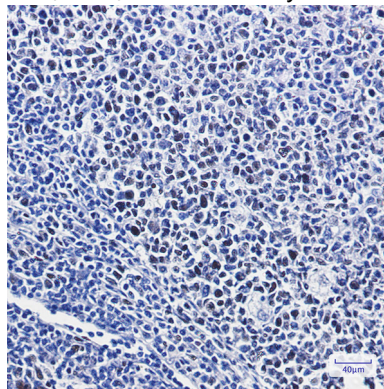
Research Area

Epigenetics and Nuclear Signaling

Image Data



Western blot analysis of Phospho-Nrf2 (Ser40) in K562, HeLa lysates using Phospho-Nrf2 (Ser40) antibody.



Immunohistochemistry analysis of paraffin-embedded Human tonsil using Nrf2 (Phospho-S40) antibody. High-pressure and temperature Sodium Citrate pH 6.0 was used for antigen retrieval.

Note

For research use only.