

Product Name: Caspase 3 Rabbit Monoclonal Antibody
Catalog #: AMRe01523



Summary

Production Name	Caspase 3 Rabbit Monoclonal Antibody
Description	Rabbit Monoclonal antibody
Host	Rabbit
Application	WB,IHC-F,IHC-P,ICC/IF,IP
Reactivity	Human

Performance

Conjugation	Unconjugated
Modification	Unmodified
Isotype	IgG
Clonality	Monoclonal
Form	Liquid
Storage	Store at 4°C short term. Aliquot and store at -20°C long term. Avoid freeze/thaw cycles.
Buffer	50mM Tris-Glycine(pH 7.4), 0.15M NaCl, 40% Glycerol, 0.01% Sodium azide and 0.05% BSA
Purification	Affinity Purification

Immunogen

Gene Name	CASP3
Alternative Names	CASP3; CPP32; Caspase-3; CASP-3; Apopain; Cysteine protease CPP32; CPP-32; Protein Yama; SREBP cleavage activity 1; SCA-1
Gene ID	836
SwissProt ID	P42574.

Application

Dilution Ratio	WB: 1:500-1:1000 IHC: 1:50-1:100 IF: 1:50-1:200 IP: 1:20
Molecular Weight	Calculated MW: 32 kDa; Observed MW: 32 kDa

Product Name: Caspase 3 Rabbit Monoclonal Antibody
Catalog #: AMRe01523



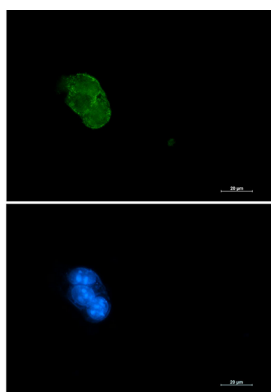
Background

Sequential activation of caspases plays a central role in the execution-phase of cell apoptosis. Caspases exist as inactive proenzymes which undergo proteolytic processing at conserved aspartic residues to produce 2 subunits, large and small, that dimerize to form the active enzyme.

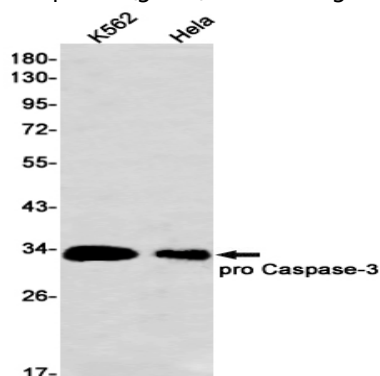
Research Area

Cell Biology

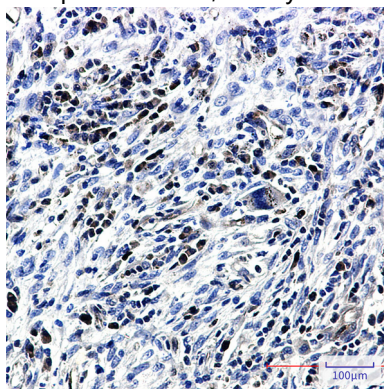
Image Data



Immunocytochemistry analysis of Caspase 3 (green) in 293 using Caspase 3 antibody, and DAPI (blue).



Western blot analysis of Caspase3 in K562, HeLa lysates using Caspase3 antibody.



Product Name: Caspase 3 Rabbit Monoclonal Antibody
Catalog #: AMRe01523



Immunohistochemistry analysis of paraffin-embedded Human lung cancer tissue using Caspase3 antibody. High-pressure and temperature Sodium Citrate pH 6.0 was used for antigen retrieval.

Note

For research use only.