

**Product Name: CD146 Rabbit Monoclonal Antibody**  
**Catalog #: AMRe01520**



## Summary

<b>Production Name</b>	CD146 Rabbit Monoclonal Antibody
<b>Description</b>	Rabbit Monoclonal antibody
<b>Host</b>	Rabbit
<b>Application</b>	WB,IHC-F,IHC-P,ICC/IF
<b>Reactivity</b>	Human,Rat

## Performance

<b>Conjugation</b>	Unconjugated
<b>Modification</b>	Unmodified
<b>Isotype</b>	IgG
<b>Clonality</b>	Monoclonal
<b>Form</b>	Liquid
<b>Storage</b>	Store at 4°C short term. Aliquot and store at -20°C long term. Avoid freeze/thaw cycles.
<b>Buffer</b>	50mM Tris-Glycine(pH 7.4), 0.15M NaCl, 40% Glycerol, 0.01% Sodium azide and 0.05% BSA
<b>Purification</b>	Affinity Purification

## Immunogen

<b>Gene Name</b>	MCAM
<b>Alternative Names</b>	CD146; MUC18
<b>Gene ID</b>	4162
<b>SwissProt ID</b>	P43121.

## Application

<b>Dilution Ratio</b>	WB: 1:500-1:1000 IHC: 1:50-1:100 IF: 1:50-1:200
<b>Molecular Weight</b>	Calculated MW: 72 kDa; Observed MW: 120 kDa

## Background

**Product Name: CD146 Rabbit Monoclonal Antibody**  
**Catalog #: AMRe01520**

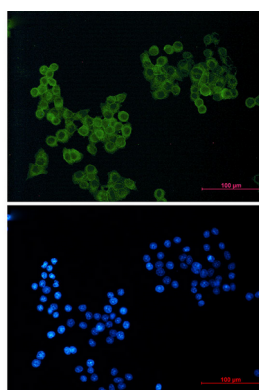


CD146 plays a role in cell adhesion, and in cohesion of the endothelial monolayer at intercellular junctions in vascular tissue. Its expression may allow melanoma cells to interact with cellular elements of the vascular system, thereby enhancing hematogeneous tumor spread. Could be an adhesion molecule active in neural crest cells during embryonic development.

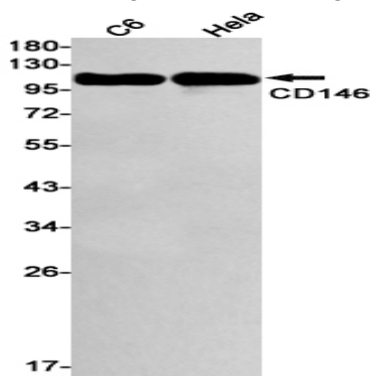
## Research Area

Immunology

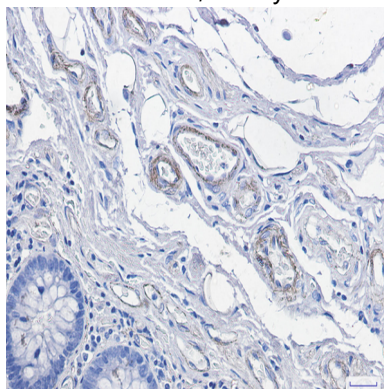
## Image Data



Immunocytochemistry analysis of CD146 (green) in HeLa using CD146 antibody, and DAPI (blue).



Western blot analysis of CD146 in C6, HeLa lysates using CD146 antibody.



Immunohistochemistry analysis of paraffin-embedded Human colon cancer tissue using CD146 antibody. High-pressure and

**Product Name: CD146 Rabbit Monoclonal Antibody**  
**Catalog #: AMRe01520**



---

temperature Sodium Citrate pH 6.0 was used for antigen retrieval.

**Note**

For research use only.