

**Product Name: Caspase 3 Rabbit Monoclonal Antibody**  
**Catalog #: AMRe01517**



## Summary

|                        |                                      |
|------------------------|--------------------------------------|
| <b>Production Name</b> | Caspase 3 Rabbit Monoclonal Antibody |
| <b>Description</b>     | Rabbit Monoclonal antibody           |
| <b>Host</b>            | Rabbit                               |
| <b>Application</b>     | WB,IHC-P,IP                          |
| <b>Reactivity</b>      | Human,Mouse                          |

## Performance

|                     |  |
|---------------------|--|
| <b>Conjugation</b>  | Unconjugated   |
| <b>Modification</b> | Unmodified   |
| <b>Isotype</b>      | IgG  |
| <b>Clonality</b>    | Monoclonal   |
| <b>Form</b>         | Liquid   |
| <b>Storage</b>      | Store at 4°C short term. Aliquot and store at -20°C long term. Avoid freeze/thaw cycles. |
| <b>Buffer</b>       | 50mM Tris-Glycine(pH 7.4), 0.15M NaCl, 40% Glycerol, 0.01% Sodium azide and 0.05% BSA    |
| <b>Purification</b> | Affinity Purification  |

## Immunogen

|                          |   |
|--------------------------|---|
| <b>Gene Name</b>         | CASP3   |
| <b>Alternative Names</b> | CASP3; CPP32; Caspase-3; CASP-3; Apopain; Cysteine protease CPP32; CPP-32; Protein Yama; SREBP cleavage activity 1; SCA-1 |
| <b>Gene ID</b>           | 836   |
| <b>SwissProt ID</b>      | P42574.   |

## Application

|                         |  |
|-------------------------|--|
| <b>Dilution Ratio</b>   | WB: 1:500-1:1000 IHC: 1:50-1:100 IP: 1:20  |
| <b>Molecular Weight</b> | Calculated MW: 32 kDa; Observed MW: 32 kDa |

**Product Name: Caspase 3 Rabbit Monoclonal Antibody**  
**Catalog #: AMRe01517**



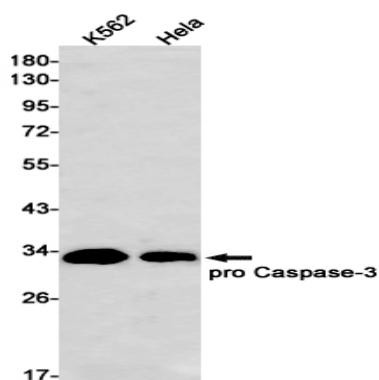
## Background

Sequential activation of caspases plays a central role in the execution-phase of cell apoptosis. Caspases exist as inactive proenzymes which undergo proteolytic processing at conserved aspartic residues to produce 2 subunits, large and small, that dimerize to form the active enzyme.

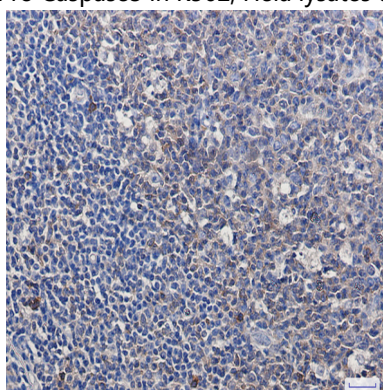
## Research Area

Cell Biology

## Image Data



Western blot analysis of Pro Caspase3 in K562, HeLa lysates using Caspase 3 antibody.



Immunohistochemistry analysis of paraffin-embedded Human tonsil using pro Caspase 3 antibody. High-pressure and temperature Sodium Citrate pH 6.0 was used for antigen retrieval.

## Note

For research use only.