

**Product Name: Cytokeratin 16 Rabbit Monoclonal Antibody**  
**Catalog #: AMRe01491**

---

## Summary

<b>Production Name</b>	Cytokeratin 16 Rabbit Monoclonal Antibody
<b>Description</b>	Rabbit Monoclonal antibody
<b>Host</b>	Rabbit
<b>Application</b>	WB,IHC-P
<b>Reactivity</b>	Human

## Performance

<b>Conjugation</b>	Unconjugated
<b>Modification</b>	Unmodified
<b>Isotype</b>	IgG
<b>Clonality</b>	Monoclonal
<b>Form</b>	Liquid
<b>Storage</b>	Store at 4°C short term. Aliquot and store at -20°C long term. Avoid freeze/thaw cycles.
<b>Buffer</b>	50mM Tris-Glycine(pH 7.4), 0.15M NaCl, 40% Glycerol, 0.01% Sodium azide and 0.05% BSA
<b>Purification</b>	Affinity Purification

## Immunogen

<b>Gene Name</b>	KRT16
<b>Alternative Names</b>	KRT16; KRT16A; Keratin; type I cytoskeletal 16; Cytokeratin-16; CK-16; Keratin-16; K16
<b>Gene ID</b>	3868
<b>SwissProt ID</b>	P08779.

## Application

<b>Dilution Ratio</b>	WB: 1:500-1:1000 IHC: 1:50-1:100
<b>Molecular Weight</b>	Calculated MW: 51 kDa; Observed MW: 51 kDa

**Product Name: Cytokeratin 16 Rabbit Monoclonal Antibody**  
**Catalog #: AMRe01491**



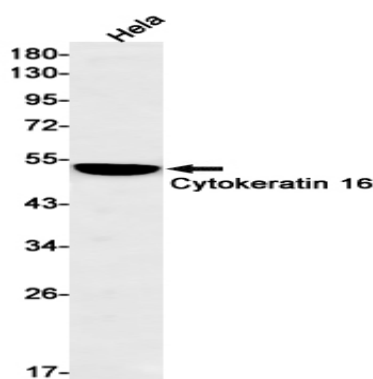
## Background

K16 is a type I cytoskeletal keratin. The keratins are intermediate filament proteins responsible for the structural integrity of epithelial cells and are subdivided into cytokeratins and hair keratins. There are two types of cytoskeletal and microfibrillar keratin: type I (acidic; 40-55 kDa) [K9 to K20] and type II (neutral to basic; 56-70 kDa) [K1 to K8].

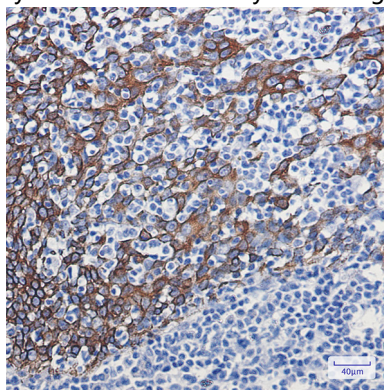
## Research Area

Signal Transduction

## Image Data



Western blot analysis of Cytokeratin 16 in HeLa lysates using Cytokeratin 16 antibody.



Immunohistochemistry analysis of paraffin-embedded Human tonsil using Cytokeratin 16 antibody. High-pressure and temperature Sodium Citrate pH 6.0 was used for antigen retrieval.

## Note

For research use only.