

**Product Name: ATM Rabbit Monoclonal Antibody**  
**Catalog #: AMRe01480**



## Summary

<b>Production Name</b>	ATM Rabbit Monoclonal Antibody
<b>Description</b>	Rabbit Monoclonal antibody
<b>Host</b>	Rabbit
<b>Application</b>	WB, ICC/IF
<b>Reactivity</b>	Human

## Performance

<b>Conjugation</b>	Unconjugated
<b>Modification</b>	Unmodified
<b>Isotype</b>	IgG
<b>Clonality</b>	Monoclonal
<b>Form</b>	Liquid
<b>Storage</b>	Store at 4°C short term. Aliquot and store at -20°C long term. Avoid freeze/thaw cycles.
<b>Buffer</b>	50mM Tris-Glycine(pH 7.4), 0.15M NaCl, 40% Glycerol, 0.01% Sodium azide and 0.05% BSA
<b>Purification</b>	Affinity Purification

## Immunogen

<b>Gene Name</b>	ATM
<b>Alternative Names</b>	ATM; Serine-protein kinase ATM; Ataxia telangiectasia mutated; A-T mutated
<b>Gene ID</b>	472
<b>SwissProt ID</b>	Q13315.

## Application

<b>Dilution Ratio</b>	WB: 1:500-1:1000 IF: 1:50-1:200
<b>Molecular Weight</b>	Calculated MW: 351 kDa; Observed MW: 351 kDa

## Background

**Product Name: ATM Rabbit Monoclonal Antibody**  
**Catalog #: AMRe01480**

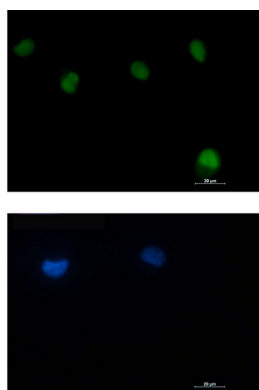


The protein encoded by this gene belongs to the PI3/PI4-kinase family. This protein is an important cell cycle checkpoint kinase that phosphorylates; thus, it functions as a regulator of a wide variety of downstream proteins, including tumor suppressor proteins p53 and BRCA1, checkpoint kinase CHK2, checkpoint proteins RAD17 and RAD9, and DNA repair protein NBS1. This protein and the closely related kinase ATR are thought to be master controllers of cell cycle checkpoint signaling pathways that are required for cell response to DNA damage and for genome stability.

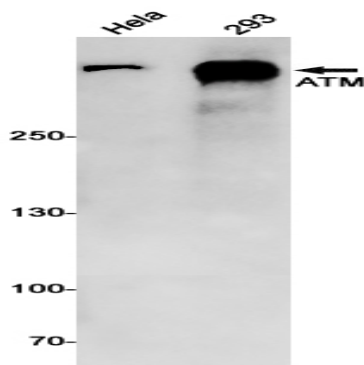
## Research Area

Epigenetics and Nuclear Signaling

## Image Data



Immunocytochemistry analysis of ATM (green) in HT-1080 using ATM antibody, and DAPI (blue).



Western blot analysis of ATM in HeLa, 293 lysates using ATM antibody.

## Note

For research use only.