

Product Name: POLD1 Rabbit Monoclonal antibody
Catalog #: AMRe01467



Summary

Production Name	POLD1 Rabbit Monoclonal antibody
Description	Recombinant Rabbit Monoclonal antibody
Host	Rabbit
Application	WB,IHC-P,ICC/IF,FC
Reactivity	Human,Mouse,Rat

Performance

Conjugation	Unconjugated
Modification	Unmodified
Isotype	IgG
Clonality	Monoclonal Antibody
Form	Liquid
Storage	Store at 4°C short term. Aliquot and store at -20°C long term. Avoid freeze/thaw cycles.
Buffer	50mM Tris-Glycine(pH 7.4), 0.15M NaCl, 40% Glycerol, 0.01% Sodium azide and 0.05% BSA
Purification	Affinity Purified

Immunogen

Gene Name	POLD1
Alternative Names	CDC2; CRCS10; MDPL; POLD; POLD1
Gene ID	5424
SwissProt ID	P28340.

Application

Dilution Ratio	WB: 1:500-1:1000 IHC: 1:50-1:100 IF: 1:50-1:200
Molecular Weight	Calculated MW: 124 kDa; Observed MW: 124 kDa

Background

Product Name: POLD1 Rabbit Monoclonal antibody
Catalog #: AMRe01467

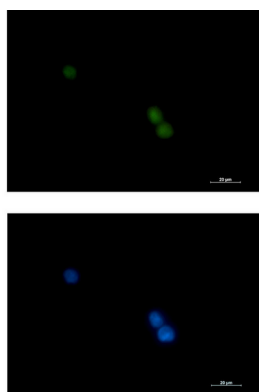


Possesses two enzymatic activities: DNA synthesis (polymerase) and an exonucleolytic activity that degrades single stranded DNA in the 3'- to 5'-direction. Required with its accessory proteins (proliferating cell nuclear antigen (PCNA) and replication factor C (RFC) or activator 1) for leading strand synthesis. Also involved in completing Okazaki fragments initiated by the DNA polymerase alpha/primase complex.

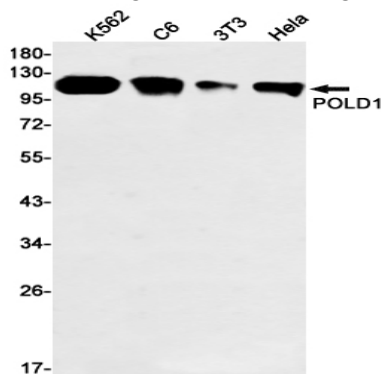
Research Area

Epigenetics and Nuclear Signaling

Image Data



Immunocytochemistry analysis of POLD1 (green) in K562 using POLD1 antibody, and DAPI (blue).



Western blot analysis of POLD1 in K562, C6, 3T3, HeLa lysates using POLD1 antibody.

Note

For research use only.