

**Product Name: PTF1A Rabbit Monoclonal Antibody**  
**Catalog #: AMRe01463**



## Summary

|                        |                                  |
|------------------------|----------------------------------|
| <b>Production Name</b> | PTF1A Rabbit Monoclonal Antibody |
| <b>Description</b>     | Rabbit Monoclonal antibody       |
| <b>Host</b>            | Rabbit                           |
| <b>Application</b>     | WB,IP                            |
| <b>Reactivity</b>      | Human,Rat                        |

## Performance

|                     |  |
|---------------------|--|
| <b>Conjugation</b>  | Unconjugated   |
| <b>Modification</b> | Unmodified   |
| <b>Isotype</b>      | IgG  |
| <b>Clonality</b>    | Monoclonal   |
| <b>Form</b>         | Liquid   |
| <b>Storage</b>      | Store at 4°C short term. Aliquot and store at -20°C long term. Avoid freeze/thaw cycles. |
| <b>Buffer</b>       | 50mM Tris-Glycine(pH 7.4), 0.15M NaCl, 40% Glycerol, 0.01% Sodium azide and 0.05% BSA    |
| <b>Purification</b> | Affinity Purification  |

## Immunogen

|                          |  |
|--------------------------|--|
| <b>Gene Name</b>         | Ptf1A  |
| <b>Alternative Names</b> | Pancreas-specific transcription factor 1a; bHLH transcription factor p48; PTF1-p48 |
| <b>Gene ID</b>           | 19213.0  |
| <b>SwissProt ID</b>      | Q9QX98.  |

## Application

|                         |  |
|-------------------------|--|
| <b>Dilution Ratio</b>   | WB: 1:500-1:1000 IP: 1:20                  |
| <b>Molecular Weight</b> | Calculated MW: 35 kDa; Observed MW: 48 kDa |

## Background

Transcription factor implicated in the cell fate determination in various organs. Binds to the E-box consensus sequence 5'-

**Product Name: PTF1A Rabbit Monoclonal Antibody**  
**Catalog #: AMRe01463**

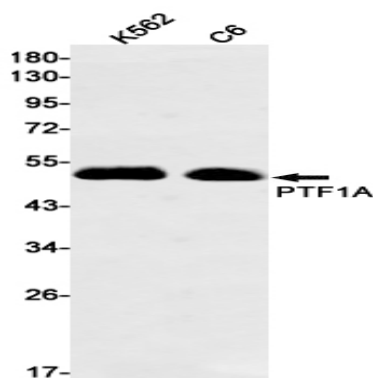


CANNTG-3'. Plays a role in early and late pancreas development and differentiation. Important for determining whether cells allocated to the pancreatic buds continue towards pancreatic organogenesis or revert back to duodenal fates.

## Research Area

Neuroscience

## Image Data



Western blot analysis of PTF1A in K562, C6 lysates using PTF1A antibody.

## Note

For research use only.