

**Product Name: Thioredoxin Rabbit Monoclonal Antibody**  
**Catalog #: AMRe01312**

---

## Summary

<b>Production Name</b>	Thioredoxin Rabbit Monoclonal Antibody
<b>Description</b>	Rabbit Monoclonal antibody
<b>Host</b>	Rabbit
<b>Application</b>	WB,IHC-F,IHC-P,ICC/IF,IP
<b>Reactivity</b>	Human

## Performance

<b>Conjugation</b>	Unconjugated
<b>Modification</b>	Unmodified
<b>Isotype</b>	IgG
<b>Clonality</b>	Monoclonal
<b>Form</b>	Liquid
<b>Storage</b>	Store at 4°C short term. Aliquot and store at -20°C long term. Avoid freeze/thaw cycles.
<b>Buffer</b>	50mM Tris-Glycine(pH 7.4), 0.15M NaCl, 40% Glycerol, 0.01% Sodium azide and 0.05% BSA
<b>Purification</b>	Affinity Purification

## Immunogen

<b>Gene Name</b>	TXN
<b>Alternative Names</b>	TXN; ADF; ATL-derived factor; SASP; Thioredoxin; TRX1; Thioredoxin delta 3; TRX; TXN delta 3; TRDX
<b>Gene ID</b>	7295
<b>SwissProt ID</b>	P10599.

## Application

<b>Dilution Ratio</b>	WB: 1:1000-1:10000 IHC: 1:50-1:200 IF: 1:100-1:500 IP: 1:20
<b>Molecular Weight</b>	Calculated MW: 12 kDa; Observed MW: 12 kDa

**Product Name: Thioredoxin Rabbit Monoclonal Antibody**  
**Catalog #: AMRe01312**

---

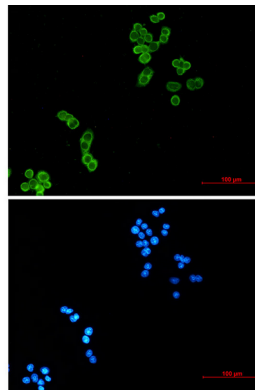
## Background

Thioredoxin (Trx) is a redox protein that is found in several species, such as bacteria, plants and mammals, and contains a conserved active site, consisting of Trp-Cys-Gly-Pro-Cys. Participates in many cellular processes including redox signaling, response to oxidative stress, and protein reduction

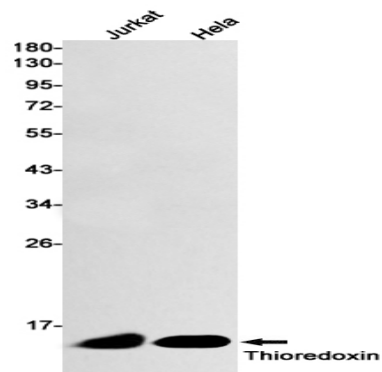
## Research Area

Tags & Cell Markers

## Image Data



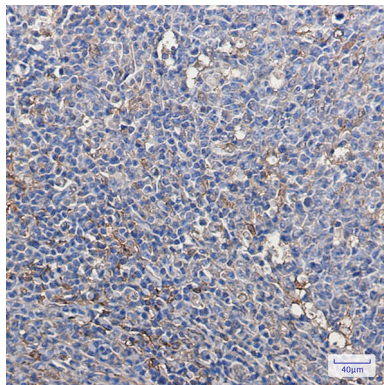
Immunocytochemistry analysis of Thioredoxin (green) in HeLa using Thioredoxin antibody, and DAPI (blue).



Western blot analysis of Thioredoxin in Jurkat, HeLa lysates using Thioredoxin antibody.

**Product Name: Thioredoxin Rabbit Monoclonal Antibody**  
**Catalog #: AMRe01312**

---



Immunohistochemistry analysis of paraffin-embedded Human tonsil using Thioredoxin/TRX antibody. High-pressure and temperature Sodium Citrate pH 6.0 was used for antigen retrieval.

### **Note**

For research use only.