

**Product Name: P70 S6 Kinase(1C7)Mouse Monoclonal Antibody**  
**Catalog #: AMM15667**

---



## Summary

<b>Production Name</b>	P70 S6 Kinase(1C7)Mouse Monoclonal Antibody
<b>Description</b>	Mouse Monoclonal Antibody
<b>Host</b>	Mouse
<b>Application</b>	IHC-P,IF-P,IF-F,ICC/IF
<b>Reactivity</b>	Human,Rat,Mouse

## Performance

<b>Conjugation</b>	Unconjugated
<b>Modification</b>	Unmodified
<b>Isotype</b>	IgG
<b>Clonality</b>	Monoclonal
<b>Form</b>	Liquid
<b>Storage</b>	Store at 4°C short term. Aliquot and store at -20°C long term. Avoid freeze/thaw cycles.
<b>Buffer</b>	Liquid in PBS containing 50% glycerol, 0.5% BSA and 0.02% New type preservative N.
<b>Purification</b>	Affinity purification

## Immunogen

<b>Gene Name</b>	RPS6KB1 STK14A P70S6K
<b>Alternative Names</b>	RPS6KB1
<b>Gene ID</b>	6198.0
<b>SwissProt ID</b>	P23443.Recombinant Protein of P70 S6 Kinase of RPS6KB1

## Application

<b>Dilution Ratio</b>	IHC-P 1:100-200, IF-P/IF-F/ICC/IF 1:50-200
<b>Molecular Weight</b>	70,85kDa

## Background

---

**Product Name: P70 S6 Kinase(1C7)Mouse Monoclonal Antibody**  
**Catalog #: AMM15667**

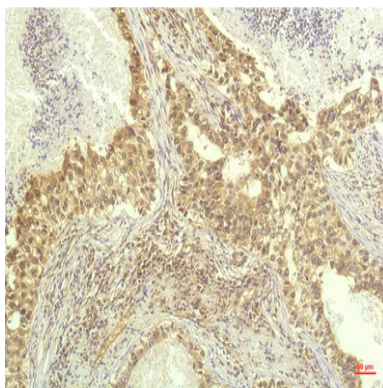


ribosomal protein S6 kinase B1(RPS6KB1) Homo sapiens This gene encodes a member of the ribosomal S6 kinase family of serine/threonine kinases. The encoded protein responds to mTOR (mammalian target of rapamycin) signaling to promote protein synthesis, cell growth, and cell proliferation. Activity of this gene has been associated with human cancer. Alternatively spliced transcript variants have been observed. The use of alternative translation start sites results in isoforms with longer or shorter N-termini which may differ in their subcellular localizations. There are two pseudogenes for this gene on chromosome 17. [provided by RefSeq, Jan 2013],catalytic activity:ATP + a protein = ADP + a phosphoprotein.,enzyme regulation:Activation by serine/threonine phosphorylation and protein kinase C, inactivated by type 2A phosphatase.,function:Phosphorylates specifically ribosomal protein S6 in response to insulin or several classes of mitogens.,similarity:Belongs to the protein kinase superfamily.,similarity:Belongs to the protein kinase superfamily. AGC Ser/Thr protein kinase family. S6 kinase subfamily.,similarity:Contains 1 AGC-kinase C-terminal domain.,similarity:Contains 1 protein kinase domain.,subunit:Interacts with PPP1R9A/neurabin-1.,tissue specificity:Widely expressed.,

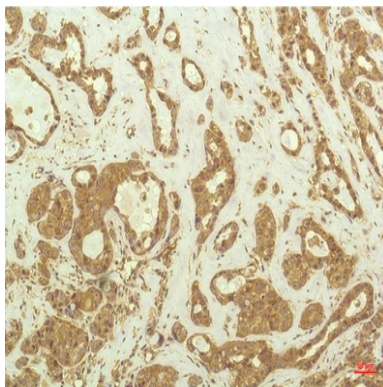
## Research Area

ErbB\_HER;mTOR;TGF-beta;Fc gamma R-mediated phagocytosis;Insulin\_Receptor;Acute myeloid leukemia;

## Image Data



Immunohistochemical analysis of paraffin-embedded Human Lung Carcinoma Tissue using P70 S6 Kinase Mouse mAb diluted at 1:200.



**Product Name: P70 S6 Kinase(1C7)Mouse Monoclonal  
Antibody  
Catalog #: AMM15667**



---

Immunohistochemical analysis of paraffin-embedded Human Breast Carcinoma Tissue using P70 S6 Kinase Mouse mAb  
diluted at 1:200.

**Note**

For research use only.