

Product Name: NBR1(7C3)Mouse Monoclonal Antibody
Catalog #: AMM14433



Summary

Production Name	NBR1(7C3)Mouse Monoclonal Antibody
Description	Mouse Monoclonal Antibody
Host	Mouse
Application	IF-P,IF-F,ICC/IF,IHC-P
Reactivity	Human,Mouse,Rat

Performance

Conjugation	Unconjugated
Modification	Unmodified
Isotype	IgG
Clonality	Monoclonal
Form	Liquid
Storage	Store at 4°C short term. Aliquot and store at -20°C long term. Avoid freeze/thaw cycles.
Buffer	Liquid in PBS containing 50% glycerol, 0.5% BSA and 0.02% New type preservative N.
Purification	Affinity purification

Immunogen

Gene Name	NBR1
Alternative Names	Next to BRCA1 gene 1 protein (Cell migration-inducing gene 19 protein) (Membrane component chromosome 17 surface marker 2) (Neighbor of BRCA1 gene 1 protein) (Protein 1A1-3B)
Gene ID	4077.0
SwissProt ID	Q14596.Recombinant Protein of NBR1

Application

Dilution Ratio	IF-P/IF-F/ICC/IF 1:50-200, IHC-P 1:50-300
Molecular Weight	120kDa

Product Name: NBR1(7C3)Mouse Monoclonal Antibody
Catalog #: AMM14433

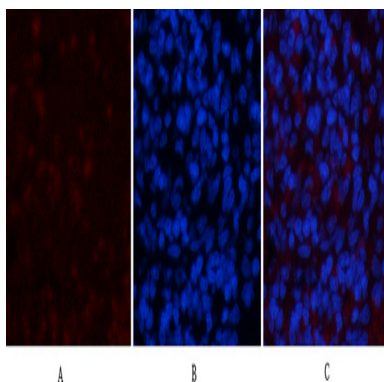


Background

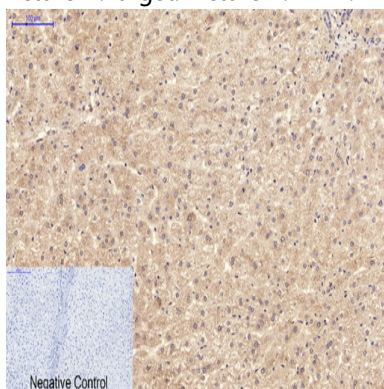
The protein encoded by this gene was originally identified as an ovarian tumor antigen monitored in ovarian cancer. The encoded protein contains a B-box/coiled-coil motif, which is present in many genes with transformation potential. It functions as a specific autophagy receptor for the selective autophagic degradation of peroxisomes by forming intracellular inclusions with ubiquitylated autophagic substrates. This gene is located on a region of chromosome 17q21.1 that is in close proximity to the BRCA1 tumor suppressor gene. Alternative splicing of this gene results in multiple transcript variants. [provided by RefSeq, Apr 2014], caution: Was originally (PubMed:8069304) thought to be the ovarian carcinoma antigen CA125., domain: The OPR domain mediates interaction with SQSTM1., similarity: Contains 1 OPR domain., similarity: Contains 1 UBA domain., similarity: Contains 1 ZZ-type zinc finger., subunit: Homooligomer and heterooligomer. Interacts with SQSTM1, titin/TTN and RNF29.,

Research Area

Image Data



Immunofluorescence analysis of rat-spleen tissue. 1, NBR1 Mouse Monoclonal Antibody (7C3) (red) was diluted at 1:200 (4°C, overnight). 2, Cy3 labeled Secondary antibody was diluted at 1:300 (room temperature, 50min). 3, Picture B: DAPI (blue) 10min. Picture A: Target. Picture B: DAPI. Picture C: merge of A+B

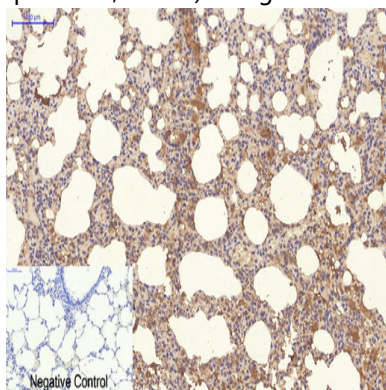


Immunohistochemical analysis of paraffin-embedded Human-liver tissue. 1, NBR1 Mouse Monoclonal Antibody (7C3) was

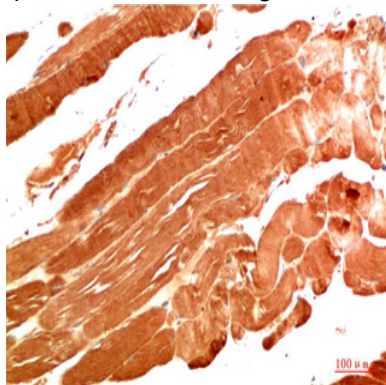
Product Name: NBR1(7C3)Mouse Monoclonal Antibody
Catalog #: AMM14433



diluted at 1:200 (4°C, overnight) . 2, Sodium citrate pH 6.0 was used for antibody retrieval (>98°C, 20min) . 3, Secondary antibody was diluted at 1:200 (room temperature, 30min) . Negative control was used by secondary antibody only.



Immunohistochemical analysis of paraffin-embedded Rat-lung tissue. 1, NBR1 Mouse Monoclonal Antibody (7C3) was diluted at 1:200 (4°C, overnight) . 2, Sodium citrate pH 6.0 was used for antibody retrieval (>98°C, 20min) . 3, Secondary antibody was diluted at 1:200 (room temperature, 30min) . Negative control was used by secondary antibody only.



Immunohistochemical analysis of paraffin-embedded Human Skeletal Muscle Tissue using NBR1 Mouse mAb diluted at 1:200.

Note

For research use only.