

**Product Name: Myosin Heavy Chain(11C2)Mouse  
Monoclonal Antibody  
Catalog #: AMM14341**

---

## Summary

<b>Production Name</b>	Myosin Heavy Chain(11C2)Mouse Monoclonal Antibody
<b>Description</b>	Mouse Monoclonal Antibody
<b>Host</b>	Mouse
<b>Application</b>	IF-P,IF-F,ICC/IF
<b>Reactivity</b>	Human,Mouse,Rat,FruitFly,Nematode

## Performance

<b>Conjugation</b>	Unconjugated
<b>Modification</b>	Unmodified
<b>Isotype</b>	IgG
<b>Clonality</b>	Monoclonal
<b>Form</b>	Liquid
<b>Storage</b>	Store at 4°C short term. Aliquot and store at -20°C long term. Avoid freeze/thaw cycles.
<b>Buffer</b>	PBS, pH 7.4, containing 0.5%BSA, 0.02% New type preservative N as Preservative and 50% Glycerol.
<b>Purification</b>	Affinity purification

## Immunogen

<b>Gene Name</b>	
<b>Alternative Names</b>	
<b>Gene ID</b>	
<b>SwissProt ID</b>	. Synthetic Peptide of Myosin Heavy Chain

## Application

<b>Dilution Ratio</b>	IF-P/IF-F/ICC/IF 1:100
<b>Molecular Weight</b>	220kDa

## Background

---

**Product Name: Myosin Heavy Chain(11C2)Mouse  
Monoclonal Antibody  
Catalog #: AMM14341**

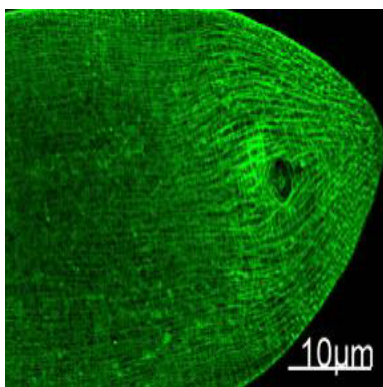
---



Skeletal muscle Myosin or myosin II is the motor protein that generates force to drive muscle contraction. It is a 520 kDa hexamer comprised of two heavy chains and four light chains. Myosin heavy chain is 220 kDa in size and consists of a long coiled-coil domain tail that mediates dimerization of the two heavy chains and a globular head region that mediates ATP-dependent sliding of actin filaments. Myosin heavy chain can be proteolytically cleaved to produce heavy meromyosin, which includes the S1 motor domain (head region) and first third of the coiled coil domain, and light meromyosin, which includes the C-terminal two thirds of the coiled coil domain.

## **Research Area**

## **Image Data**



Immunofluorescence Staining of nematode tissue with MYH mouse mAb (11C2) diluted at 1:100. (Provide by Tsinghua University) .

## **Note**

For research use only.