

Product Name: MICU1(Mix)Mouse Monoclonal Antibody
Catalog #: AMM13895

Summary

Production Name	MICU1(Mix)Mouse Monoclonal Antibody
Description	Mouse Monoclonal Antibody
Host	Mouse
Application	WB,IF-P,IF-F,ICC/IF,IHC-P
Reactivity	Human,Mouse,Rat

Performance

Conjugation	Unconjugated
Modification	Unmodified
Isotype	IgG
Clonality	Monoclonal
Form	Liquid
Storage	Store at 4°C short term. Aliquot and store at -20°C long term. Avoid freeze/thaw cycles.
Buffer	PBS, pH 7.4, containing 0.5%BSA, 0.02% New type preservative N as Preservative and 50% Glycerol.
Purification	Affinity purification

Immunogen

Gene Name	MICU1
Alternative Names	Calcium uptake protein 1, mitochondrial; Atopy-related autoantigen CALC; ara CALC; Calcium-binding atopy-related autoantigen 1; allergen Hom s 4
Gene ID	10367.0
SwissProt ID	Q9BPX6.Recombinant Protein of MICU1

Application

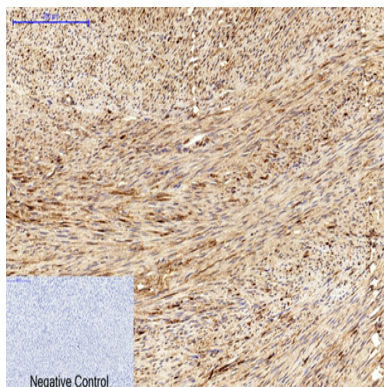
Dilution Ratio	WB 1:1000-2000, IHC-P 1:100-200, IF-P/IF-F/ICC/IF 1:200
Molecular Weight	55kDa

Background

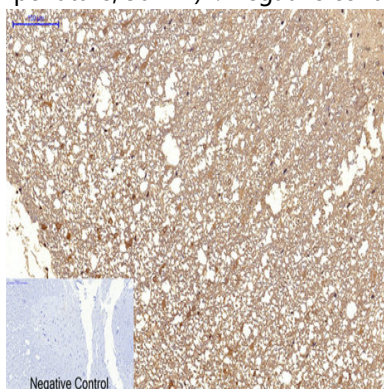
This gene encodes an essential regulator of mitochondrial Ca^{2+} uptake under basal conditions. The encoded protein interacts with the mitochondrial calcium uniporter, a mitochondrial inner membrane Ca^{2+} channel, and is essential in preventing mitochondrial Ca^{2+} overload, which can cause excessive production of reactive oxygen species and cell stress. Alternatively spliced transcript variants encoding different isoforms have been described. [provided by RefSeq, Mar 2013],allergen:Causes an allergic reaction in human. Binds to IgE from atopic dermatitis (AD) patients. Identified as an IgE autoantigen in atopic dermatitis (AD) patients with severe skin manifestations.,function:Induces T helper 1-mediated autoreactivity, which is accompanied by the release of IFNG.,sequence caution:Contaminating sequence. Sequence of unknown origin in the N-terminal part.,similarity:Contains 2 EF-hand domains.,tissue specificity:Expressed in epithelial cell line. Strongly expressed in epidermal keratinocytes and dermal endothelial cells.,

Research Area

Image Data



Immunohistochemical analysis of paraffin-embedded Human-uterus tissue. 1,MICU1 Monoclonal Antibody (Mix) was diluted at 1:200 (4°C,overnight) . 2, Sodium citrate pH 6.0 was used for antibody retrieval (>98°C,20min) . 3,Secondary antibody was diluted at 1:200 (room temperature, 30min) . Negative control was used by secondary antibody only.

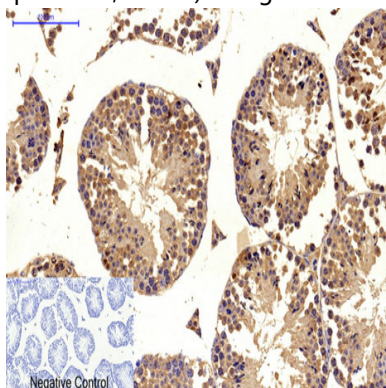


Immunohistochemical analysis of paraffin-embedded Rat-spinal-cord tissue. 1,MICU1 Monoclonal Antibody (Mix) was

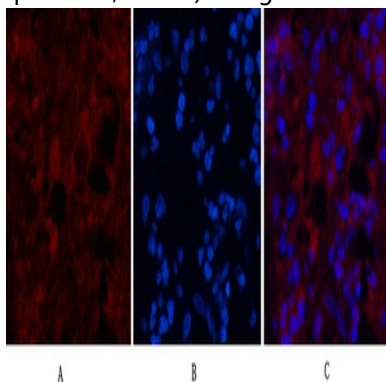
Product Name: MICU1(Mix)Mouse Monoclonal Antibody
Catalog #: AMM13895



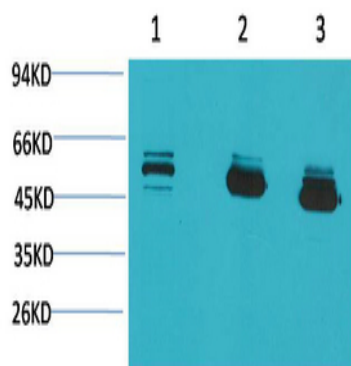
diluted at 1:200 (4°C, overnight) . 2, Sodium citrate pH 6.0 was used for antibody retrieval (>98°C, 20min) . 3, Secondary antibody was diluted at 1:200 (room temperature, 30min) . Negative control was used by secondary antibody only.



Immunohistochemical analysis of paraffin-embedded Mouse-testis tissue. 1, MICU1 Monoclonal Antibody (Mix) was diluted at 1:200 (4°C, overnight) . 2, Sodium citrate pH 6.0 was used for antibody retrieval (>98°C, 20min) . 3, Secondary antibody was diluted at 1:200 (room temperature, 30min) . Negative control was used by secondary antibody only.

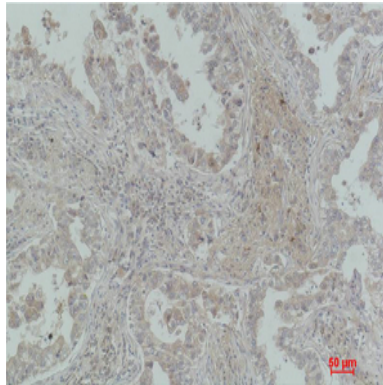


Immunofluorescence analysis of Human-appendix tissue. 1, MICU1 Monoclonal Antibody (Mix) (red) was diluted at 1:200 (4°C, overnight) . 2, Cy3 labeled Secondary antibody was diluted at 1:300 (room temperature, 50min) . 3, Picture B: DAPI (blue) 10min. Picture A: Target. Picture C: merge of A+B



Western blot analysis of 1) MCF7, 2) Mouse Brain Tissue, 3) Rat Brain Tissue using MICU1 Monoclonal Antibody.

Product Name: MICU1(Mix)Mouse Monoclonal Antibody
Catalog #: AMM13895



Immunohistochemical analysis of paraffin-embedded Human Lung Carcinoma using MICU1 Monoclonal Antibody.

Note

For research use only.