

Product Name: Ki 67(4A8)Mouse Monoclonal Antibody
Catalog #: AMM12993



Summary

Production Name	Ki 67(4A8)Mouse Monoclonal Antibody
Description	Mouse Monoclonal Antibody
Host	Mouse
Application	WB,IHC-P,IF-P,IF-F,ICC/IF
Reactivity	Human

Performance

Conjugation	Unconjugated
Modification	Unmodified
Isotype	IgG
Clonality	Monoclonal
Form	Liquid
Storage	Store at 4°C short term. Aliquot and store at -20°C long term. Avoid freeze/thaw cycles.
Buffer	PBS, pH 7.4, containing 0.5%BSA, 0.02% New type preservative N as Preservative and 50% Glycerol.
Purification	Affinity purification

Immunogen

Gene Name	MKI67
Alternative Names	MKI67; Antigen KI-67
Gene ID	4288.0
SwissProt ID	P46013.Synthetic Peptide of Ki 67

Application

Dilution Ratio	IHC-P 1:200, IF-P/IF-F/ICC/IF 1:50-200
Molecular Weight	

Background

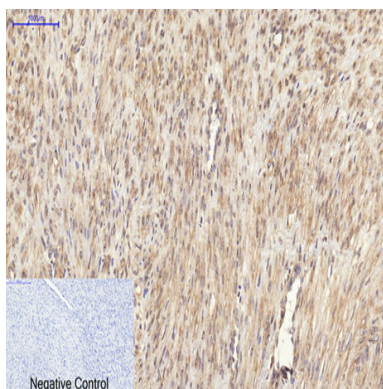
Product Name: Ki 67(4A8)Mouse Monoclonal Antibody
Catalog #: AMM12993



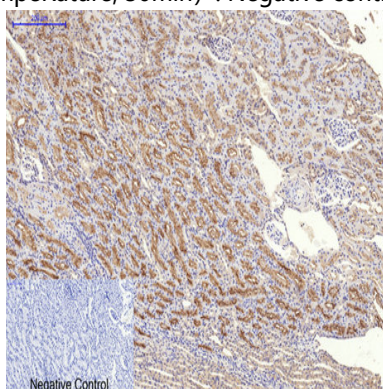
This gene encodes a nuclear protein that is associated with and may be necessary for cellular proliferation. Alternatively spliced transcript variants have been described. A related pseudogene exists on chromosome X. [provided by RefSeq, Mar 2009],developmental stage:Expression of this antigen occurs preferentially during late G1, S, G2 and M phases of the cell cycle, while in cells in G0 phase the antigen cannot be detected.,function:Thought to be required for maintaining cell proliferation.,online information:Ki-67 entry,similarity:Contains 1 FHA domain.,subcellular location:Predominantly localized in the G1 phase in the perinucleolar region, in the later phases it is also detected throughout the nuclear interior, being predominantly localized in the nuclear matrix. In mitosis, it is present on all chromosomes.,subunit:Interacts with KIF15. Binds through the FHA domain to MKI67IP.,

Research Area

Image Data

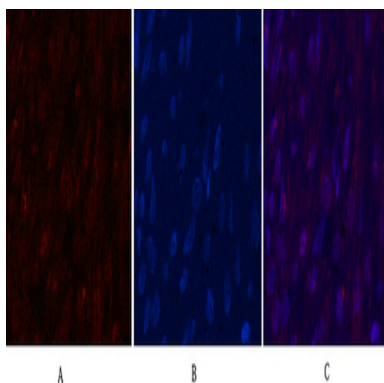


Immunohistochemical analysis of paraffin-embedded Human-uterus-cancer tissue. 1,Ki 67 Monoclonal Antibody (4A8) was diluted at 1:200 (4°C,overnight) . 2, Sodium citrate pH 6.0 was used for antibody retrieval (>98°C,20min) . 3,Secondary antibody was diluted at 1:200 (room temperature, 30min) . Negative control was used by secondary antibody only.

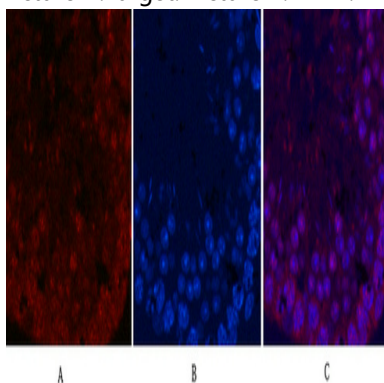


Immunohistochemical analysis of paraffin-embedded Rat-kidney tissue. 1,Ki 67 Monoclonal Antibody (4A8) was diluted at 1:200 (4°C,overnight) . 2, Sodium citrate pH 6.0 was used for antibody retrieval (>98°C,20min) . 3,Secondary antibody was diluted at 1:200 (room temperature, 30min) . Negative control was used by secondary antibody only.

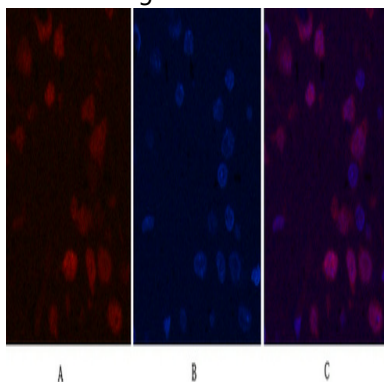
Product Name: Ki 67(4A8)Mouse Monoclonal Antibody
Catalog #: AMM12993



Immunofluorescence analysis of Human-breast-cancer tissue. 1, Ki 67 Monoclonal Antibody (4A8) (red) was diluted at 1:200 (4°C, overnight). 2, Cy3 labeled Secondary antibody was diluted at 1:300 (room temperature, 50min). 3, Picture B: DAPI (blue) 10min. Picture A: Target. Picture B: DAPI. Picture C: merge of A+B

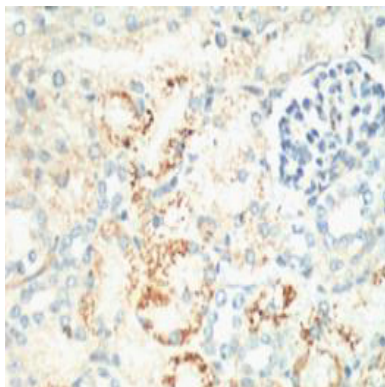


Immunofluorescence analysis of Mouse-testis tissue. 1, Ki 67 Monoclonal Antibody (4A8) (red) was diluted at 1:200 (4°C, overnight). 2, Cy3 labeled Secondary antibody was diluted at 1:300 (room temperature, 50min). 3, Picture B: DAPI (blue) 10min. Picture A: Target. Picture B: DAPI. Picture C: merge of A+B



Immunofluorescence analysis of Rat-brain tissue. 1, Ki 67 Monoclonal Antibody (4A8) (red) was diluted at 1:200 (4°C, overnight). 2, Cy3 labeled Secondary antibody was diluted at 1:300 (room temperature, 50min). 3, Picture B: DAPI (blue) 10min. Picture A: Target. Picture B: DAPI. Picture C: merge of A+B

Product Name: Ki 67(4A8)Mouse Monoclonal Antibody
Catalog #: AMM12993



IHC staining of Mouse Kidney tissue, diluted at 1:200.

Note

For research use only.