

Product Name: IL-8(13F8)Mouse Monoclonal Antibody
Catalog #: AMM12571



Summary

Production Name	IL-8(13F8)Mouse Monoclonal Antibody
Description	Mouse Monoclonal Antibody
Host	Mouse
Application	IHC-P,IF-P,IF-F,ICC/IF
Reactivity	Human

Performance

Conjugation	Unconjugated
Modification	Unmodified
Isotype	IgG
Clonality	Monoclonal
Form	Liquid
Storage	Store at 4°C short term. Aliquot and store at -20°C long term. Avoid freeze/thaw cycles.
Buffer	Liquid in PBS containing 50% glycerol, 0.5% BSA and 0.02% New type preservative N.
Purification	Affinity purification

Immunogen

Gene Name	IL8 CXCL8
Alternative Names	IL8
Gene ID	3576.0
SwissProt ID	P10145.Synthetic C-TERM Peptide of IL-8

Application

Dilution Ratio	IHC-P 1:100-200, IF-P/IF-F/ICC/IF 1:50-200
Molecular Weight	11kDa

Background

The protein encoded by this gene is a member of the CXC chemokine family. This chemokine is one of the major mediators

Product Name: IL-8(13F8)Mouse Monoclonal Antibody
Catalog #: AMM12571

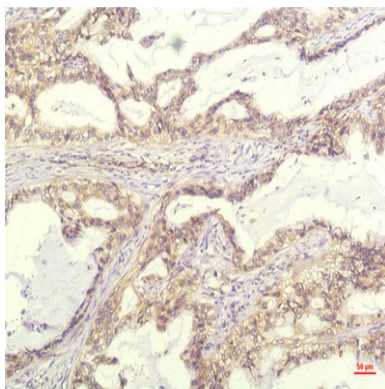


of the inflammatory response. This chemokine is secreted by several cell types. It functions as a chemoattractant, and is also a potent angiogenic factor. This gene is believed to play a role in the pathogenesis of bronchiolitis, a common respiratory tract disease caused by viral infection. This gene and other ten members of the CXC chemokine gene family form a chemokine gene cluster in a region mapped to chromosome 4q. [provided by RefSeq, Jul 2008],function:IL-8 is a chemotactic factor that attracts neutrophils, basophils, and T-cells, but not monocytes. It is also involved in neutrophil activation. It is released from several cell types in response to an inflammatory stimulus. IL-8(6-77) has a 5-10-fold higher activity on neutrophil activation, IL-8(5-77) has increased activity on neutrophil activation and IL-8(7-77) has a higher affinity to receptors CXCR1 and CXCR2 as compared to IL-8(1-77), respectively.,online information:Interleukin-8 entry,PTM:Several N-terminal processed forms are produced by proteolytic cleavage after secretion from at least peripheral blood monocytes, leukocytes and endothelial cells. In general, IL-8(1-77) is referred to as interleukin-8. IL-8(6-77) is the most prominent form.,similarity:Belongs to the intercrine alpha (chemokine CxC) family.,subunit:Homodimer.,

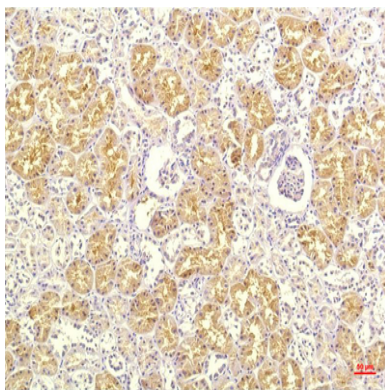
Research Area

Cytokine-cytokine receptor interaction;Chemokine;Toll_Like;NOD-like receptor;RIG-I-like receptor;Epithelial cell signaling in Helicobacter pylori infection;Pathways in cancer;Bladder cancer;

Image Data



Immunohistochemical analysis of paraffin-embedded Human Lung Carcinoma Tissue using IL-8 Mouse mAb diluted at 1:200.



Product Name: IL-8(13F8)Mouse Monoclonal Antibody
Catalog #: AMM12571



Immunohistochemical analysis of paraffin-embedded Human Kidney Tissue using IL-8 Mouse mAb diluted at 1:200.

Note

For research use only.