

Product Name: CK7(12D7)Mouse Monoclonal Antibody
Catalog #: AMM08857



Summary

Production Name	CK7(12D7)Mouse Monoclonal Antibody
Description	Mouse Monoclonal Antibody
Host	Mouse
Application	IF-P,IF-F,ICC/IF,WB,IHC-P,IP
Reactivity	Human,Mouse,Rat

Performance

Conjugation	Unconjugated
Modification	Unmodified
Isotype	IgG
Clonality	Monoclonal
Form	Liquid
Storage	Store at 4°C short term. Aliquot and store at -20°C long term. Avoid freeze/thaw cycles.
Buffer	PBS, pH 7.4, containing 0.5%BSA, 0.02% New type preservative N as Preservative and 50% Glycerol.
Purification	Affinity purification

Immunogen

Gene Name	KRT7
Alternative Names	KRT7; SCL; Keratin, type II cytoskeletal 7; Cytokeratin-7; CK-7; Keratin-7; K7; Sarcolectin; Type-II keratin Kb7
Gene ID	3855.0
SwissProt ID	P08729.Synthetic Peptide of CK7

Application

Dilution Ratio	IF-P/IF-F/ICC/IF 1:50-200, WB 1:1000-2000, IHC-P 1:200, IP 1:200
Molecular Weight	54kDa

Product Name: CK7(12D7)Mouse Monoclonal Antibody
Catalog #: AMM08857

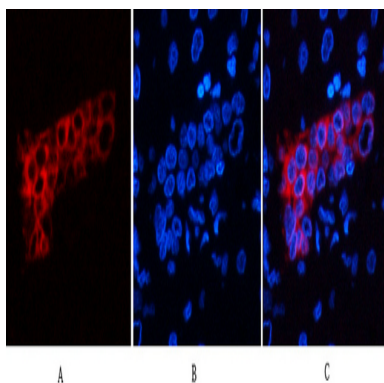


Background

keratin 7(KRT7) Homo sapiens The protein encoded by this gene is a member of the keratin gene family. The type II cytokeratins consist of basic or neutral proteins which are arranged in pairs of heterotypic keratin chains coexpressed during differentiation of simple and stratified epithelial tissues. This type II cytokeratin is specifically expressed in the simple epithelia lining the cavities of the internal organs and in the gland ducts and blood vessels. The genes encoding the type II cytokeratins are clustered in a region of chromosome 12q12-q13. Alternative splicing may result in several transcript variants; however, not all variants have been fully described. [provided by RefSeq, Jul 2008],function:Blocks interferon-dependent interphase and stimulates DNA synthesis in cells. Involved in the translational regulation of the human papillomavirus type 16 E7 mRNA (HPV16 E7),induction:Up-regulated by retinoic acid.,mass spectrometry:PubMed:11840567,miscellaneous:There are two types of cytoskeletal and microfibrillar keratin: I (acidic; 40-55 kDa) and II (neutral to basic; 56-70 kDa),PTM:Arg-20 is dimethylated, probably to asymmetric dimethylarginine.,similarity:Belongs to the intermediate filament family.,subunit:Heterotetramer of two type I and two type II keratins. Interacts with eukaryotic translation initiator factor 3 (eIF3) subunit EIF3S10 and with HPV16 E7.,tissue specificity:Expressed in cultured epidermal, bronchial and mesothelial cells but absent in colon, ectocervix and liver. Observed throughout the glandular cells in the junction between stomach and esophagus but is absent in the esophagus.,

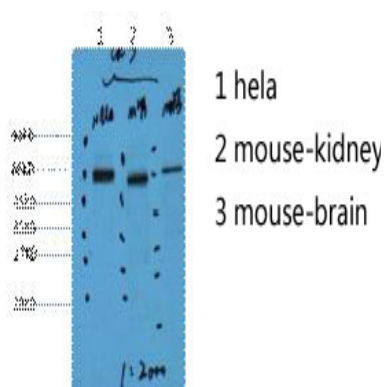
Research Area

Image Data

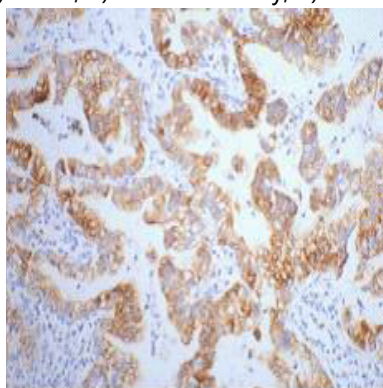


Immunofluorescence analysis of human-liver tissue. 1,CK7 Monoclonal Antibody (12D7) (red) was diluted at 1:200 (4°C,overnight) . 2, Cy3 labeled Secondary antibody was diluted at 1:300 (room temperature, 50min) .3, Picture B: DAPI (blue) 10min. Picture A:Target. Picture B: DAPI. Picture C: merge of A+B

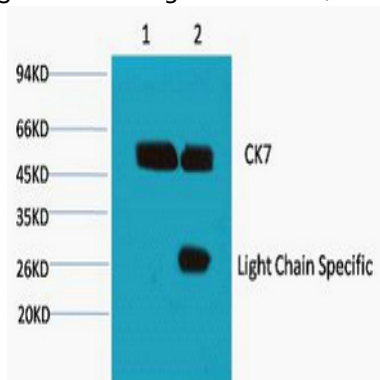
Product Name: CK7(12D7)Mouse Monoclonal Antibody
Catalog #: AMM08857



Western blot analysis of 1) Hela, 2) Mouse Kidney, 3) Mouse Brain, diluted at 1:2000.



IHC staining of human lung cancer tissue, diluted at 1:200.



1) Input: Hela Cell Lysate 2) IP product: IP dilute 1:200

Note

For research use only.