

**Product Name: CDX2(14H6)Mouse Monoclonal Antibody**  
**Catalog #: AMM08595**

---

## Summary

<b>Production Name</b>	CDX2(14H6)Mouse Monoclonal Antibody
<b>Description</b>	Mouse Monoclonal Antibody
<b>Host</b>	Mouse
<b>Application</b>	WB,IF-P,IF-F,ICC/IF,IHC-P
<b>Reactivity</b>	Human,Mouse,Rat

## Performance

<b>Conjugation</b>	Unconjugated
<b>Modification</b>	Unmodified
<b>Isotype</b>	IgG
<b>Clonality</b>	Monoclonal
<b>Form</b>	Liquid
<b>Storage</b>	Store at 4°C short term. Aliquot and store at -20°C long term. Avoid freeze/thaw cycles.
<b>Buffer</b>	PBS, pH 7.4, containing 0.5%BSA, 0.02% New type preservative N as Preservative and 50% Glycerol.
<b>Purification</b>	Affinity purification

## Immunogen

<b>Gene Name</b>	CDX2
<b>Alternative Names</b>	CDX2; CDX3; Homeobox protein CDX-2; CDX-3; Caudal-type homeobox protein 2
<b>Gene ID</b>	1045.0
<b>SwissProt ID</b>	Q99626.Synthetic Peptide of CDX2

## Application

<b>Dilution Ratio</b>	WB 1:1000, IHC-P 1:200, IF-P/IF-F/ICC/IF 1:200
<b>Molecular Weight</b>	42kDa

**Product Name: CDX2(14H6)Mouse Monoclonal Antibody**  
**Catalog #: AMM08595**

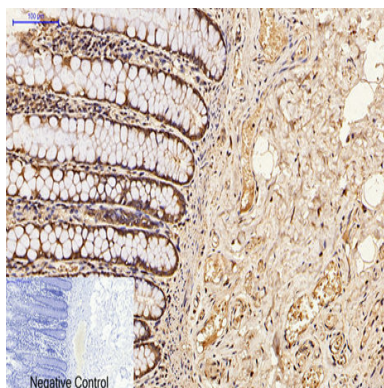


## Background

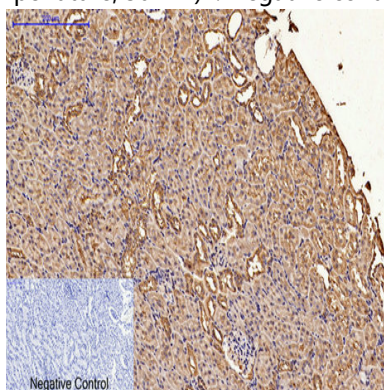
This gene is a member of the caudal-related homeobox transcription factor gene family. The encoded protein is a major regulator of intestine-specific genes involved in cell growth and differentiation. This protein also plays a role in early embryonic development of the intestinal tract. Aberrant expression of this gene is associated with intestinal inflammation and tumorigenesis. [provided by RefSeq, Jan 2012],function:Involved in the transcriptional regulation of multiple genes expressed in the intestinal epithelium. Important in broad range of functions from early differentiation to maintenance of the intestinal epithelial lining of both the small and large intestine.,PTM:Phosphorylation of Ser-60 mediates the transactivation capacity.,similarity:Belongs to the Caudal homeobox family.,similarity:Contains 1 homeobox DNA-binding domain.,

## Research Area

## Image Data



Immunohistochemical analysis of paraffin-embedded Human-colon tissue. 1,CDX2 Monoclonal Antibody (14H6) was diluted at 1:200 (4°C,overnight) . 2, Sodium citrate pH 6.0 was used for antibody retrieval (>98°C,20min) . 3,Secondary antibody was diluted at 1:200 (room temperature, 30min) . Negative control was used by secondary antibody only.

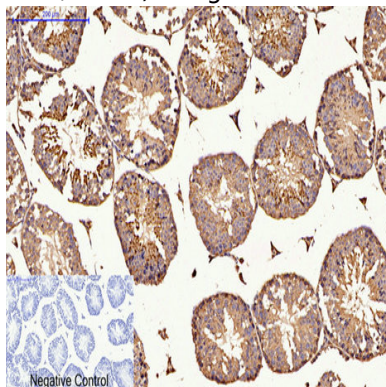


Immunohistochemical analysis of paraffin-embedded Rat-kidney tissue. 1,CDX2 Monoclonal Antibody (14H6) was diluted

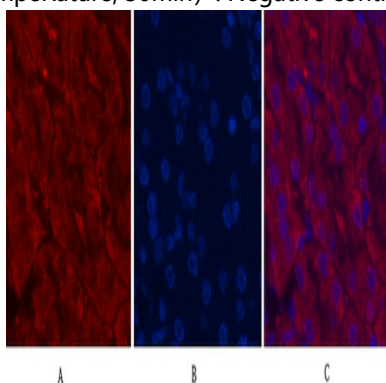
**Product Name: CDX2(14H6)Mouse Monoclonal Antibody**  
**Catalog #: AMM08595**



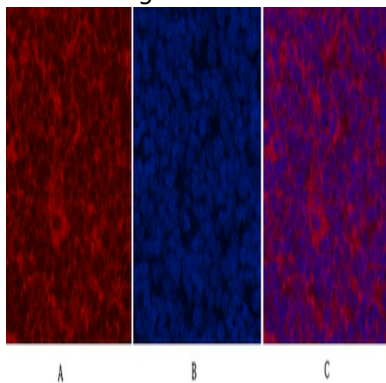
at 1:200 (4°C,overnight) . 2, Sodium citrate pH 6.0 was used for antibody retrieval (>98°C,20min) . 3,Secondary antibody was diluted at 1:200 (room temperature, 30min) . Negative control was used by secondary antibody only.



Immunohistochemical analysis of paraffin-embedded Mouse-testis tissue. 1,CDX2 Monoclonal Antibody (14H6) was diluted at 1:200 (4°C,overnight) . 2, Sodium citrate pH 6.0 was used for antibody retrieval (>98°C,20min) . 3,Secondary antibody was diluted at 1:200 (room temperature, 30min) . Negative control was used by secondary antibody only.



Immunofluorescence analysis of Mouse-kidney tissue. 1,CDX2 Monoclonal Antibody (14H6) (red) was diluted at 1:200 (4°C,overnight) . 2, Cy3 labeled Secondary antibody was diluted at 1:300 (room temperature, 50min) .3, Picture B: DAPI (blue) 10min. Picture A:Target. Picture B: DAPI. Picture C: merge of A+B

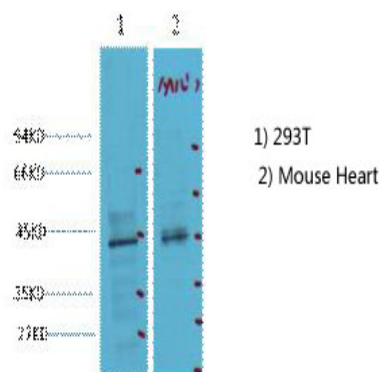


Immunofluorescence analysis of Rat-spleen tissue. 1,CDX2 Monoclonal Antibody (14H6) (red) was diluted at 1:200 (4°C,overnight) . 2, Cy3 labeled Secondary antibody was diluted at 1:300 (room temperature, 50min) .3, Picture B:

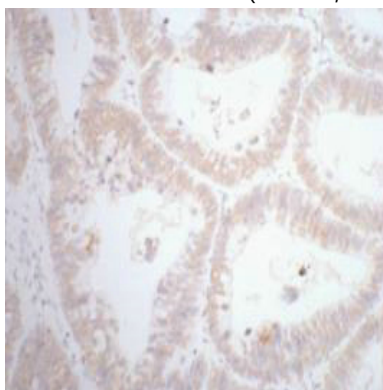
**Product Name: CDX2(14H6)Mouse Monoclonal Antibody**  
**Catalog #: AMM08595**



DAPI (blue) 10min. Picture A:Target. Picture B: DAPI. Picture C: merge of A+B



Western blot analysis of 1) 293T, 2) Mouse Heart tissue, diluted at 1:2000. cells nucleus extracted by Minute TM Cytoplasmic and Nuclear Fractionation kit (SC-003, Inventbiotech, MN, USA) .



IHC staining of human rectal cancer tissue, diluted at 1:200.

## Note

For research use only.