

Product Name: Beclin-1(5C2)Mouse Monoclonal Antibody
Catalog #: AMM07530

Summary

Production Name	Beclin-1(5C2)Mouse Monoclonal Antibody
Description	Mouse Monoclonal Antibody
Host	Mouse
Application	WB,IHC-P,IF-P,IF-F,ICC/IF
Reactivity	Human,Rat,Mouse,Bovine

Performance

Conjugation	Unconjugated
Modification	Unmodified
Isotype	IgG
Clonality	Monoclonal
Form	Liquid
Storage	Store at 4°C short term. Aliquot and store at -20°C long term. Avoid freeze/thaw cycles.
Buffer	Liquid in PBS containing 50% glycerol, 0.5% BSA and 0.02% New type preservative N.
Purification	Affinity purification

Immunogen

Gene Name	BECN1
Alternative Names	BECN1
Gene ID	8678.0
SwissProt ID	Q14457.Synthetic Peptide of Beclin-1 at AA range of 110-190

Application

Dilution Ratio	WB 1:1000-2000, IHC-P 1:100-200, IF-P/IF-F/ICC/IF 1:50-200
Molecular Weight	60kDa

Background

Product Name: Beclin-1(5C2)Mouse Monoclonal Antibody
Catalog #: AMM07530

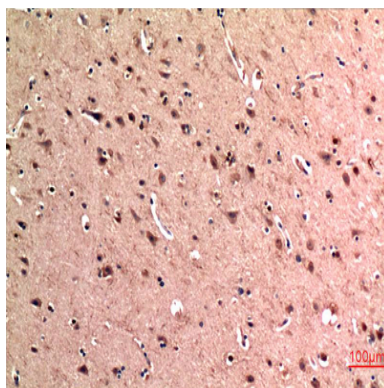


beclin 1(BECN1) Homo sapiens This gene encodes a protein that regulates autophagy, a catabolic process of degradation induced by starvation. The encoded protein is a component of the phosphatidylinositol-3-kinase (PI3K) complex which mediates vesicle-trafficking processes. This protein is thought to play a role in multiple cellular processes, including tumorigenesis, neurodegeneration and apoptosis. Alternative splicing results in multiple transcript variants. [provided by RefSeq, Sep 2015],function:Plays a central role in autophagy (By similarity). May play a role in antiviral host defense. Protects against infection by a neurovirulent strain of Sindbis virus.,similarity:Belongs to the beclin family.,subcellular location:Expressed in dendrites and cell bodies of cerebellar Purkinje cells.,subunit:Interacts with GOPC and GRID2. Interacts with AMBRA1. Probably forms a complex with AMBRA1 and PIK3C3 (By similarity). Interacts with BCL2 and BCL2L1.,tissue specificity:Ubiquitous.,

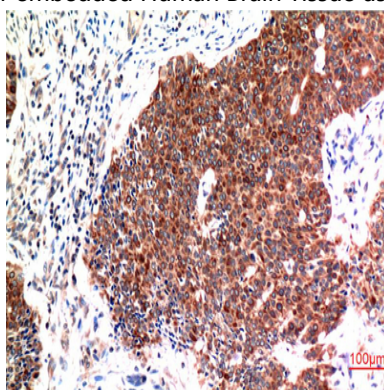
Research Area

Regulation of autophagy;

Image Data

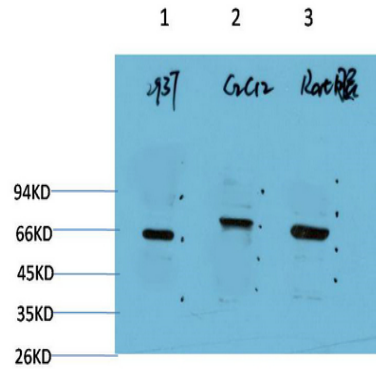


Immunohistochemical analysis of paraffin-embedded Human Brain Tissue using Beclin-1 Mouse mAb diluted at 1:200.



Immunohistochemical analysis of paraffin-embedded Human Breast Carcinoma Tissue using Beclin-1 Mouse mAb diluted at 1:200.

Product Name: Beclin-1(5C2)Mouse Monoclonal Antibody
Catalog #: AMM07530



Western blot analysis of 1) 293T Cell Lysate, 2) C2C12 Cell Lysate, 3) Rat Brain Tissue Lysate using Beclin-1 Mouse mAb diluted at 1:2000.

Note

For research use only.